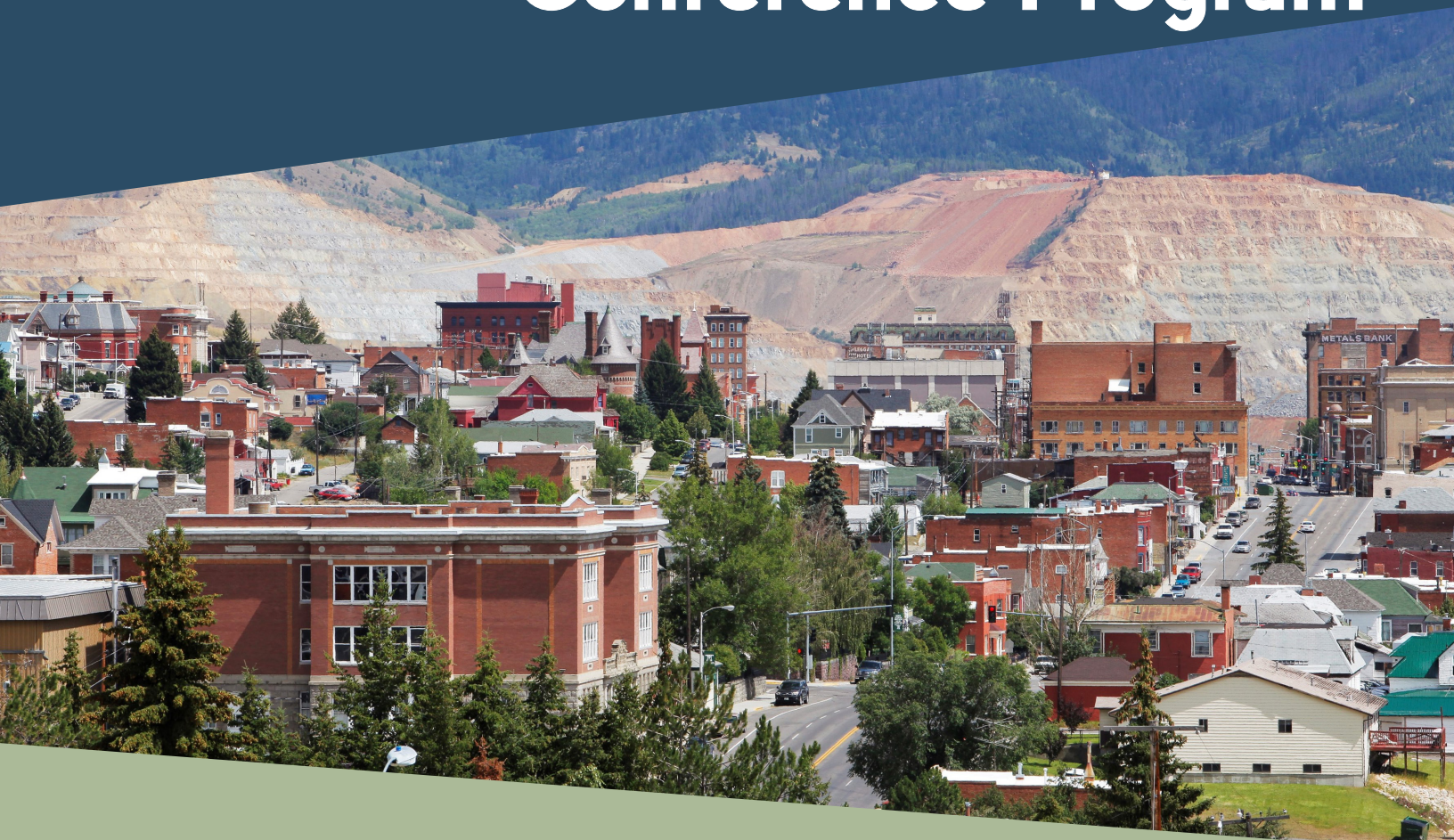


**BACK**  
**TO**  
**THE FUTURE**  
**IN BUTTE**



**2023**

**Conference Program**



***September 19-21***

Finlen Hotel  
Uptown Butte





# Conference Sponsors

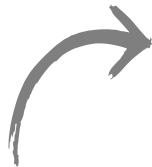
## Partner Level



## ENVIRONMENTAL & CIVIL ENGINEERING

**Founded on Practical Solutions. Driven by Innovation.**

Since its inception in 2000, WET has grown from a highly specialized group of groundwater professionals into a full-service geoscience, environmental, and engineering consulting firm.



[waterenvtech.com](http://waterenvtech.com)



MONTANA | WYOMING | (406) 782-5220



# PLANNING

## FOR HOW YOU WANT TO GROW



### FUNDING SOLUTIONS

CIPs  
GIS Solutions  
Grant Writing & Administration



### ON-CALL PLANNING

Zoning Reviews & Updates  
Subdivision Administration  
Public Engagement & Strategic Planning



### COMP PLANNING

CEDS  
Growth Policies  
Sidewalks, Parks, Trails, & Transit Planning

Our Team Includes

# AICP

American Institute of  
Certified Planners

# GISP

Geographic  
Information Systems  
Professionals

# CGW

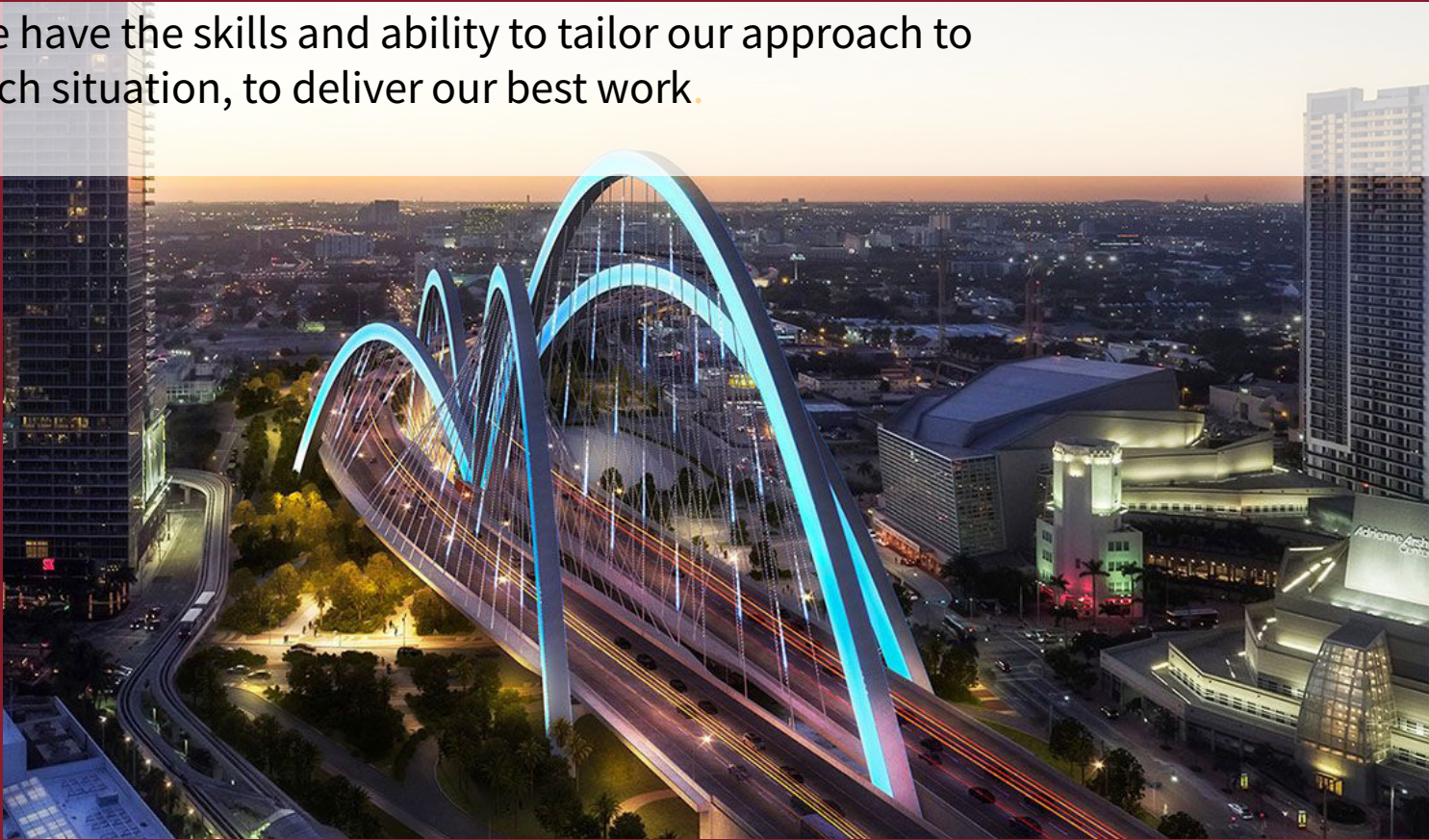
Certified Grant Writers





# We add value by designing smart.

We have the skills and ability to tailor our approach to each situation, to deliver our best work.



# FDR





# MONTANA STATE LIBRARY

GIS COORDINATION

## Mission

*The Montana State Library (MSL) helps all organizations, communities, and Montanans thrive through excellent library resources and services.*

The Montana State Library is committed to strengthening libraries and information services for all Montanans through leadership, advocacy, and service. The outstanding staff and partners of the State Library strive to meet this mission every day.

International library strategist Lorcan Dempsey challenges librarians to think about how we can collaborate to solve infrastructure challenges in ways that improve economies of scale, which then permit librarians and information professionals to focus more resources on innovation and opportunities for community engagement.

Through consulting services, education, and creative collaboration, we at the State Library focus much of our energy and creative resources to support the infrastructure on which our partners rely. And we challenge ourselves and our partners to be innovative collaborators in our communities. As a result, Montana libraries are better positioned to be their communities' choice for discovery and exchange of information and ideas. Our dedication to strengthening libraries and information services for all strengthens community life for all Montanans.



# HELPING COMMUNITIES THRIVE

## Our Firm

Orion Planning + Design (OPD) is a multi-disciplinary firm specializing in the creation of dynamic, inclusive, resilient communities that can adapt and thrive in a changing world. Our team of professionals has experience in nearly every aspect of local, regional, and state planning. We work coast-to-coast and internationally offering a variety of professional community planning and design services to government, private developers, landowners, and non-profits.

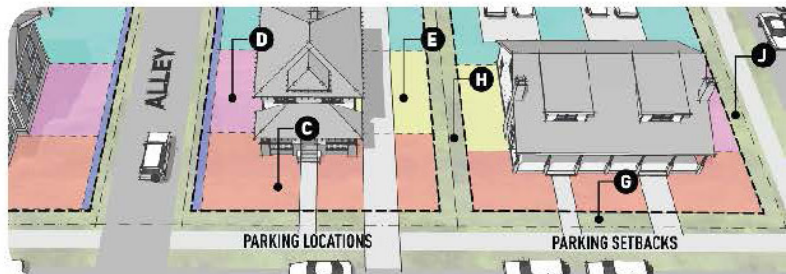
## Our Approach

Using a holistically integrated team approach, OPD provides the highest level of service to our clients. Our processes engage and motivate, and our products inspire and enrich. OPD believes in collaborative planning and place-based, context-sensitive solutions. We facilitate locally driven processes and strong working relationships with staff, committees and boards. We distinguish ourselves from our competitors by:

- 1) **Building capacity.** We educate, train, and support our clients and communities so that they have the knowledge and confidence to implement plans, codes, and recommendations.
- 2) **Emphasizing implementation.** Our consulting services always include detailed guidance on how to get from vision to reality.
- 3) **Integrating plans and codes.** Our approach and experience focuses on implementing plans through local codes. We plan with coding in mind and our code products reflect plan priorities.
- 4) **Valuing volunteerism.** We respect the role of community volunteers and can boast significant time serving communities at home and abroad.

## Our Services

OPD offers a variety of professional community planning and design services ranging from comprehensive plans, site design, and land development regulations to on-call staff assistance, mapping and analysis.



### LOCATIONS:

- Missoula, Montana
- Hernando, Mississippi
- Chattanooga, Tennessee
- St. Simons Island, Georgia
- Jacksonville, Florida
- Ormond Beach, Florida

### Orion Planning + Design

1105 Village Way  
 Missoula, MT 59802  
 P 419-297-1604  
[www.OrionPlanningDesign.com](http://www.OrionPlanningDesign.com)

### SERVICES:

- Comprehensive Plans
- Master Planning
- Coding
- Transportation / Mobility
- Urban Design
- Landscape Architecture
- Site Design
- Visioning
- Education and Outreach



# Helping Montana's communities with their **PLANNING, FUNDING,** and **INFRASTRUCTURE NEEDS** for over 35 years.



**\$ OVER \$411 MILLION**  
in grant funding secured for our clients.

- On-Call Planning Services
- Grant Writing and Administration
- Growth Policies
- Capital Improvement Plans
- Hazard Mitigation Plans
- Floodplain Administration
- Parks and Recreation
- Code and Regulations

See what's *possible*.

SCAN ME



Learn More About  
Our Planning  
Services!

## Office Locations:

**Helena**  
2501 Belt View Dr.  
Helena, MT 59601  
(406) 449-8627

**Billings**  
6780 Trade Center Ave.  
Billings, MT 59101  
(406) 652-5000

**Great Falls**  
702 2nd Street S, #2  
Great Falls, MT 59405  
(406) 952-1109



[www.greatwesteng.com](http://www.greatwesteng.com)





# Platinum Level

## PARTNERING WITH YOUR COMMUNITY.

Comprehensive Planning | Trails + Recreation Planning | Visioning + Engagement | StoryMaps + Cartography | Tourism Planning | Housing + Community Development



Photo: Todd Powell

MANAGE TOURISM AND DEVELOP "AT YOUR PACE"



BALANCE CONSERVATION AND RECREATION



PLAN FOR YOUR COMMUNITY'S FUTURE



HARNESS THE OUTDOOR RECREATION ECONOMY


THE VALUE OF EXPERIENCE.



**50** DJ & CI  
CELEBRATING 50 YEARS

[DJANDA.COM](http://DJANDA.COM)





Leaders in  
**engineering**  
and **planning.**

- 5 Locations in Montana
- 88 Team Members in Montana
- Full-Service Engineering & Surveying
- Planning & Land Development
- Traffic Studies & Right-of-Way
- Floodplain, Erosion & Stormwater Control



IMEGCORP.COM

## What We Do

Marty's experience in local government, specifically at the Director level means he understands the politics, processes, regulations and personalities that can affect and ultimately determine project entitlement. While each community has its own zoning, subdivision, design, and development regulations many commonalities exist. The key is knowing how the pieces work together, or against each other. Marty knows how to put the puzzle pieces together.

fall creek  
**PLANNING**

# Letter from the MAP President

Dear MAP Membership,

Welcome to the 2023 Montana Association of Planners Conference in historic Butte, Montana! We have an exciting conference with sessions for everyone. The MAP membership meeting will also have a number of updates on what the Board is working on, including establishing our APA Chapter, continuing efforts to promote critical legislation, and evaluating how we engage with and support our membership.

For those of you who were with us in Billings last year, you'll remember that we kicked off our official efforts to form a Montana Chapter of the American Planning Organization. We collected signatures, talked to members, and started the process to petition APA as a new state Chapter. Now, thanks to all of your enthusiasm and support we were approved as a chapter and ready to launch this new "chapter" in MAP's history. We still retain direct oversight of how MAP operates, but have access to all of the resources that APA offers.

In the near term, we are updating our website and will be switching our membership registration to APA. You will no longer receive separate requests for membership renewals through MAP. Instead, you will see chapter dues associated with your APA membership on the same schedule as your national membership. These chapter fees will replace the West Central Chapter fees you currently pay, and will continue the current MAP membership rate of \$65. Our website will offer the same resources and have the same local Montana branding, but will include our new Chapter logo. All this to say that MAP will continue to function much as we always have.

On top of the APA chapter transition, the last year was incredibly busy at the legislative session. MAP's Legislative Committee stayed active and engaged, resulting in a seemingly successful session despite the wide range of bills impacting planning across the state. There were some wins, a few losses, but overall our efforts to advance sound planning principles in our state laws made significant progress. Senate Bill 382 and the concepts it enshrines in state law arose directly out of the strategic sessions MAP held starting in Miles City way back in 2016. Check out the sessions presented during the conference for more details on all the changes happening state-wide!

Finally, I hope you all enjoy the conference - the Butte committee did a tremendous amount of work. MAP relies heavily on our volunteer board members, committees, and generous sponsors both to host a killer conference and also to support the organization throughout the year. We seriously couldn't do it without all of you, so thanks and keep on doing the hard work to make Montana full of communities we love.

Sincerely,

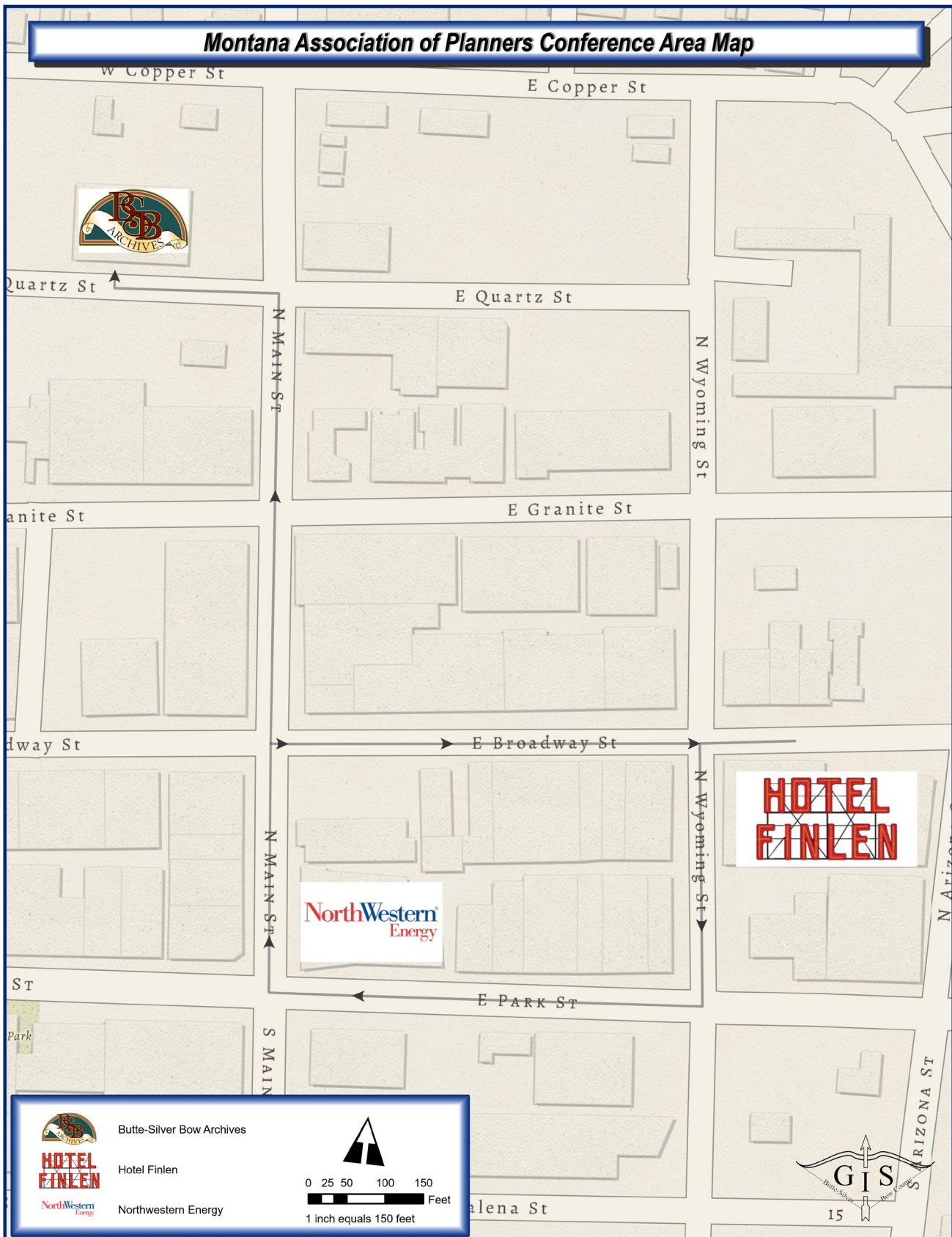


Aaron Wilson, AICP

President, APA Montana/Montana Association of Planners



# Conference Map





# 2023 Montana Association of Planners Conference

September 19-21, 2023

Finlen Hotel, Butte MT

## Abbreviated Schedule

Explore the Past

Head to the Future

Hoverboards & DeLorean's

### Tuesday September 19

8:00-9:00

Registration & Networking, Finlen Ballroom

9:30-10:30

Ethics  
Location: Finlen Hotel Ballroom

Uptown Butte Plan  
Location: Northwest Energy Building

11:00-12:00

When Subdivision Review Goes Off the Rails  
Location: Butte Archives Building

An Introduction to Choosing By Advantages (CBA)  
Location: Finlen Hotel Ballroom

Transportation Planning and Public Health: Monitoring the impact of transportation systems on community health outcomes in Montana.  
Location: Northwest Energy Building

12:15-1:15

Welcoming Remarks  
Lunch & Keynote Finlen Ballroom  
Keynote Panel: The Story of Butte  
CM: 1

1:45-2:45

Montana's State Geologic and Water Resources—Providing Tools for County Planning  
Location: Finlen Hotel Ballroom

Communities in Transition: The bumpy road from resource extraction to recreation economies in the Mountain West  
Location: Northwest Energy Building

Tour: Inclusive Interdisciplinary Walking Audit  
Location: Meet at Butte Archives Building

3:15-4:15

Historic Preservation Panel- How it's done around the State  
Location: Butte Archives Building

Legislative Committee Meeting  
Location: Finlen Hotel Ballroom

4:30-6:00

ITE/MAP Meetup  
Location: Quarry Brewing

6:00-8:00

Carpenters Union Hall Hoedown



## Wednesday, September 20

9:00-10:00	Building a Community Planning Platform to Serve all Montana Location: Finlen Hotel Ballroom	Parks Planning with Community Liaisons, A Pilot Project for Community Engagement Location: Butte Archives Building	Pedal to the People Location: Northwest Energy Building
10:30-11:30	9:30-11:30- Session and Tour: Restoring the Carpenter's Hall Location: Meet at Finlen Hotel Lobby	Plan for Health, Session 1: What are the social determinants of health? Location: Northwest Energy Building	Outdoor Recreation Plans: A Multi-Jurisdictional Approach to Connecting Recreation Hubs, Clusters and Corridors Location: Butte Archives Building
12:00-1:00	Lunch & Keynote Keynote: Petra Hertado- 1 Credit		
1:30-2:30	1:30-3:30 Trolley Tour of Butte Location: Meet at Finlen Hotel Lobby	Plan for Health, Session 2: Skills for healthy community development. Location: Northwest Energy Building	Planners in Housing: A Discussion with HUD Location: Finlen Hotel Ballroom
3:00-4:00			Show me the money: planning and partnerships for federal grants Location: Finlen Hotel Ballroom
4:30-5:30	Explore the Past: How Sanborn Fire Insurance Maps are used to interpret the evolution of our built environment Location: Butte Archives Building	Sustainability: Resilient Butte - Sustainability, Health and Resilience Plan (SHARP): Climate Solutions for a Healthy Butte Location: Finlen Hotel Ballroom	IJA: Opportunities and Strategies for Communities Big and Small to Identify and Develop Competitive Grant Applications Location: Northwest Energy Building
6:30-8:00	Event: Cavalier Lounge Social Hour		

## Thursday, September 21

8:30-9:30	Equity- Listening to Voices from the Past to Plan for the Future: Bozeman's Equity and Inclusion Plan and the importance of historical representation. (CM Equity) Location: Finlen Hotel Ballroom	Montana State Library GIS Training- MLS and GIS Data with ArcGIS Online Location: Northwest Energy Building	TDM or Transportation Demand Management, it's not just for work, it's also for play Location: Butte Archives Building
10:00-11:00	Law: Land Use Legislation and Cases Affecting Montana: September 2021-September 2023 Location: Finlen Hotel Ballroom (CM: Law)		

## Thursday, September 21 (cont.)

11:30-12:30	Lunch MAP Membership Meeting		
1:00-2:00	Underground Mine Tour (1) 1:00-2:30 Location: Meet at Finlen Hotel Lobby or the mine tour site	Senate Bill 382 Location: Finlen Hotel Ballroom	Butte-Silver Bow 2023 Parks and Trails Master Plan and Plan Im- plementation Location: Northwest Energy Building
2:00-3:30	Underground Mine Tour (2) Location: Meet at Finlen Hotel Lobby or the mine tour site		



# Detailed Conference Program



## Tuesday, September 19

8:00 am 9:00 am  
Registration & Networking  
Materials sponsored by  
*fall creek*  
**PLANNING**

---

Coffee Bar and Snacks Sponsored By



---

9:30- 10:30AM

**Session Name:** Ethics Cases- Year in Review

**Credits:** 1 AICP Required Ethics Credit

**Presenter(s):** Allison Mouch, AICP

**Session Location:** Finlen Hotel Ballroom

**Session Description:** An overview of APA Ethics cases and outcomes in 2022

**Presenter Bio(s):** Allison joined Orion Planning + Design in September 2016 and is currently based in Missoula, Montana. Bringing 16 years of professional planning experience to the team, her areas of specialization include comprehensive plans, code development, public engagement, project management, mapping, and analysis, with a focus on collaboration as a means of achieving positive outcomes. Mouch has wide-ranging experience working with private developers and public clients on forward-thinking land use and design solutions, fostering meaningful partnerships that result in sound policy and planning decisions. She is AICP and an active member of the American Planning Association (APA) as the Region V Board Director, past-president of APA's Western Central Chapter, and currently

sits on the Montana Association of Planners (MAP) Board of Directors. She holds a bachelor's degree in architecture from Miami University (Ohio), and a master's degree in urban and environmental planning from the University of Virginia in Charlottesville.

## **Session Name: Uptown Butte Plan**

**Credits-** 1

**Presenter(s):** Shanna Adams P.E., CNU-A

**Session Location:** Northwest Energy Building

**Session Description:** How a group of passionate citizens partnered with the County to create an implementation focused revitalization plan. We'll discuss how the Uptown Butte Plan came to be. How we stayed focused on implementation, and how we've started to fund the projects

**Presenter Bio(s):** Shanna Adams is a professional civil engineer with 20+ years of experience working on infrastructure projects. Through the process of creating the Uptown Butte Plan, she's re-discovered a passion for projects at the intersection of urban design, community development, and economic revitalization.

---

**11:00AM- 12:00PM**

## **Session Name: When Subdivision Review Goes Off The Rails**

**Credits-** 1

**Presenter(s):** Karen Alley, JD

**Session Location:** Butte Archives Building

**Session Description:** This session would focus on when a subdivision review goes off the rails: what to do and how to handle new information; when the planning board (or public) states the application isn't sufficient; how to handle variances; public comment analysis; as well as DEQ/sanitation review and water rights.

**Presenter Bio(s):** Karen Alley is Associate General Counsel for Montana Association of Counties. Her main focus is land use law and assisting counties with their subdivision review process. Karen has been at MACo for (almost) 2 years and previously was the Hill County Attorney

## **Session Name: An Introduction to Choosing By Advantages (CBA)**

**Credits-** 1

**Presenter(s):** Peter Walker-Keleher, PE, VMA

**Session Location:** Finlen Hotel Ballroom

**Session Description:** Attendees will receive an introduction to the Choosing By Advantages (CBA) decision making process, a methodology for making sound decisions by looking at the advantages of two or more options. The CBA process has been applied to a wide range of infrastructure and planning projects. Attendees will also experience a facilitation technique that allows a group to effectively consider varying view points while developing consensus-based decisions.

**Presenter Bio(s):** Drawing upon his background in education and facilitation, including a Masters in Education from Harvard University, Peter leads Value Analysis workshops for the National Park Service, the Montana Department of Transportation, and for the Federal Highway Administration. These workshops are grounded in the CBA methodology. Peter strives for workshops that are engaging,



impactful, and useful. This one will be no exception.

**Session Name:** Transportation Planning and Public Health- Monitoring the impact of transportation systems on community health outcomes in Montana

**Credits-** 1

**Presenter(s):** Jennifer MacFarlane, MPH

**Session Location:** Northwest Energy Building

**Session Description:** Transportation systems can impact both physical and mental health, but the health effects of planning decisions, beyond safety and air pollution, are often overlooked. Transportation systems serve as a modifiable variable contributing to health behaviors and outcomes. This session will review findings of a recent audit of transportation plans and explore factors preventing use of health-related performance measures to monitor impacts of transportation systems on public health outcomes in MT.

**Presenter Bio(s):** Jen MacFarlane is a Research Assistant with over 20 years of experience in the field of Public Health. She has focused her career on program planning, implementation, and policy change related to chronic disease prevention and youth development. Jennifer's interests include the intersection between public health and transportation, especially as it relates to increasing physical activity across the lifespan.

---

12:15- 1:15PM

Lunch  
Opening Remarks

Keynote Panel Session: The Story of Butte- 1 Credit

Sponsored By



**Presenter Bio(s):**

Dylan Pipinich is Planning Director of Butte-Silver Bow. Dylan is originally from Anaconda, Montana, and received his bachelor's in civil engineering from Montana State University and master's in project engineering and management from Montana Technological University. Dylan worked as an engineer on cleanup projects in the Butte and Anaconda region before switching gears and becoming a planner for Butte-Silver Bow. As director, Dylan is focused on improving local policy and practices related to long-range planning, land use, and community development in a time of growth and revitalization for the historic city of Butte and surrounding communities.

Julia is a Butte native and Master of Urban and Regional Planning with over a decade of experience in urban planning and environmental policy. Butte's fascinating urban development tied to copper mining informs her work planning for environmental cleanup and restoration, infrastructure improvements, and

redevelopment of mining impacted neighborhoods. Whether creating plans for mineyard rehabilitation, planting trees on the Butte Hill, or encouraging public involvement in environmental decision making, one thing is always at the forefront of her work - striving to do the best she can for Butte.

Aubrey Jaap serves as the Archives Director and has been with the organization since 2007. She heads the Archives digitization programs and oral history collections, as well as manages the non-current government record for Butte-Silver Bow. She collaborated with the University of Montana's Irish Studies Program to curate an exhibit titled "Erin's Exiled Children: Irish America and the Road to the Rising," which traveled throughout Montana's libraries and museums. In 2016, she successfully wrote a grant to the National Historical Publications and Records Commission to catalog and preserve the historic C. Owen Smithers Photograph Collection. Aubrey is also a member of the Montana State Historical Records and Advisory Board. She has her B.S. in Public Relations from Montana State University-Billings.

---

1:45-2:45PM

## **Session Name:** Montana's State Geologic and Water Resources Providing Tools for County Planning

**Credits-** 1

**Presenter(s):** Ginette Adbo & Katie McDonald

**Session Location:** Finlen Hotel Ballroom

**Session Description:** County planners face multiple challenges about land use and its relation to water resources and geology. Protecting groundwater quantity and quality are high priorities for Montana's growing population. Hazards such as earthquakes and landslides are important factors to consider prior to development. With increasing development, sand and gravel is also needed. The Montana Bureau of Mines and Geology will present available tools to help inform county planning decisions.

### **Presenter Bio(s):**

Ginette Adbo manages the MBMG's Ground Water Investigation Program. She has worked for the MBMG for over 30 years on various projects focused on groundwater/surface-water interactions and how Montana's changing land use affects water resources. She has a Master's degree in Hydrogeology from Penn State University.

Katie McDonald manages the Geologic Mapping Program. She has worked for the MBMG for over 25 years with a focus on geologic mapping in western Montana. She grew up in Philipsburg, MT and is witnessing firsthand the need for sensible planning. Katie has a Master's degree in Geology from University of California, Davis.

## **Session Name:** Communities in Transition: The bumpy road from resource extraction to recreation in the Mountain West

**Credits-** 1

**Presenter(s):** Lindsey Romaniello, AICP

**Session Location:** Northwest Energy Building

**Session Description:** In the picturesque landscapes of the Mountain West, a profound transformation has been unfolding. As the era of resource extraction wanes, communities are grappling with the challenges and opportunities of pivoting to recreation-based economies. This session delves deep into



the intricacies of this transition, highlighting the complexities and nuances that local leaders, businesses, and residents face. Attendees will gain insights into: 1) The challenges and pitfalls of transitioning to a recreation-based economy. 2) best practices and success stories from communities that are currently making or have made the shift. And 3) the critical role of long-range planning in ensuring community stability and vitality, and ecological conservation during this transition. This session promises to initiate engaging discussion about this topic, as well as help chart a sustainable and prosperous future for the Mountain West.

**Presenter Bio(s):** Lindsey is an associate planner for SE Group, a private consultant firm that focuses on community and recreation planning around the country. Her planning-related interests include community outreach/conflict resolution, economic sustainability, and equitable housing development. She received her master's degree in urban planning from the University of Arizona, where she focused her studies on rural communities in the western United States. Lindsey has a public sector background and has worked as a planner for several municipalities in the Rocky Mountain west, including Missoula County. During this time, she has focused on long-range planning and the implementation and creation of land use policy. She is currently a resident of Missoula, Montana and is the board secretary for the Montana Association of Planners.

## **Session Name:** Tour- Inclusive Interdisciplinary Walking Audit

**Credits-** 2.5

**Presenter(s):** Karma Edwards, Ben Weiss, Cassie Weightman

**Session Location:** Butte Archives Building

**Session Description:** Join us for an Inclusive Interdisciplinary Walk Audit (I2WA) to collaboratively assess and enhance the walkability of Butte's neighborhoods. A successful I2WA brings together participants from various fields such as urban planning, architecture, community advocacy, accessibility, and local governance will come together to evaluate the pedestrian experience, infrastructure, and overall accessibility of key areas. The I2WA encourages open dialogue, knowledge sharing, and collaboration among diverse perspectives, fostering an atmosphere where MAP attendees and community members can actively contribute to shaping a more walkable and vibrant Butte.

### **Presenter Bio(s):**

Cassie Wick is an advocate for the civil rights of people with disabilities in her day job at Ability Montana in Butte. She works toward increasing accessibility and other interventions that create better quality of life and opportunities for people living with disabilities. Cassie's part time gig is as a co-owner and quality control supervisor at 5518 Designs and Dig City Supply. Her favorite part about owning businesses in Uptown Butte, besides adding to the overall energy of the area, is the ability for her and her partner Jon to give back to the community and its incredible members.

Ben Weiss is Senior Transportation Planner for the City of Missoula. With his hands in many pies - from long range planning to facility design to project development to safety promotion, education and encouragement - Ben helps Missoula maintain its place among the best places to bike and walk in the country. Ben has led several walk audits alongside Meg Traci and is working to incorporate them into the pre-design phase of all city-led transportation projects. Ben is also passionate about music and encourages conference attendees to tune in to 102.5 KBMF, a community radio station he helped co-found in Butte.

Karma Edwards is a public health consultant with the National Association of Chronic Disease Directors (NACDD), and currently serves as the Walkability Lead within NACDD's Center for Advancing Healthy Communities. With this role, she leads the Walkability Action Institute project and Island Walkability efforts for NACDD, and works with a collective total of 95 local, regional, and state project participant locations from 35 states and two island locations throughout the US mainland and island territories. She

especially enjoys the overlap between physical activity, active transportation, built design, and disability inclusion and holds the general belief that when communities are built for everyone, no one gets left out.

---

3:15-4:15PM

## **Session Name:** Legislative Committee Session Meeting

**Credits-** 1

**Presenter(s):** Andrew Hagermeier, AICP

**Session Location:** Finlen Ballroom

**Session Description:** This meeting of the Montana Association of Planners Legislative Committee, open to all conference attendees, is designed to inform and engage planners of the latest information in state policy and legislative activities. This last Legislative Session was especially active for legislative discussions affecting Montana's enabling statutes. At this session, you will hear updates from the 2023 Legislative Session, discuss MAPs legislative priorities for 2025, and how MAP members can participate in MAP Legislative activities.

### **Presenter Bio(s):**

Andrew Hagermeier is the Senior Planner managing the long range planning and implementation section of Missoula County's Department of Planning, Development, and Sustainability. Andrew is a member of the Montana Association of Planners Board of Directors, and is co-chair of the MAP Legislative Committee.

## **Session Name:** Historic Preservation Panel- How it's done around the State

**Credits-** 1

**Presenter(s):** Sarah Rosenberg AICP, Elizabeth Johnson, Kathleen McCourt, Gayla Hess

**Session Location:** Butte Archives Building

**Session Description:** Join the Historic Preservation Officers from Butte-Silver Bow, Anaconda, Missoula, and Bozeman for a panel discussion where they discuss historic preservation in their communities. We will also get their perspectives on the future of historic preservation and how it can be better incorporated into planning to help achieve community goals.

**Presenter Bio(s):** Sarah Rosenberg, AICP, is a Planner and the Historic Preservation Officer for the City of Bozeman. She joined the City in 2017 as a development review planner but has since taken over managing the Historic Preservation Program. She also serves on the Montana Association of Planners board. Prior to working in Bozeman, she worked for municipalities in Colorado. She holds a Master of Science in Historic Preservation and a Master in Urban and Regional Planning from the University of Colorado Denver.

Elizabeth Johnson is the Historic Preservation Officer for the City of Missoula. She started with the City in 2021 after moving to Montana from Tennessee, where she worked as a graduate research assistant at the Middle Tennessee State University Center for Historic Preservation. She holds a Master of Arts in Public History with an historic preservation emphasis from Arkansas State University.

Kate McCourt is the Historic Preservation Officer for Butte-Silver Bow. She has worked for the State of Montana at Virginia City's National Historic Landmark District, at the federal level as a contractor for the University of Montana's Center for Integrated Research on the Environment, in the private sector for



the Foundation for Montana's History as Heritage Projects & Grants Manager. and in local government as Historic Preservation Officer for Great Falls-Cascade County. She holds an undergraduate degree in history, a master's degree in archaeology, and an M.A. certification in historic preservation.

Gayla Hess has been a Planner for Anaconda-Deer Lodge County since 2018. She is the Historic Preservation Officer with the local Historic Resources Board. The board's recent projects have included a historic preservation plan, hosting a locally focused speaker series, and restoration of the last remaining Washoe Smelter building which marked the entrance to the complex.

---

4:30-5:45PM

ITP/MAP Planners Meetup



---

6:00-8:00PM

Carpenters Union Hall Hoedown

Sponsored By



# Wednesday, September 20

8:00 am 9:00 am

Registration & Networking  
Morning Drink Bar Sponsored By



---

9:00-10:00AM

## **Session Name:** Building a Community Planning Platform to Serve all Montana

**Credits-** 1

**Presenter(s):** Cody Ferguson, PhD & John Houseal FAICP

**Session Location:** Finlen Hotel Ballroom

**Session Description:** The Montana Community Planning Platform (CPP) will be a single online location that provides resources to assist with planning activities including demographic, economic, land use, and other data resources. The CPP will work across state government, leveraging new technology to create a one-stop shop for your planning data needs. This talk will preview the project, provide updates, and elicit feedback from the MT Planning community on the types of information that is needed.

**Presenter Bio(s):** Cody Ferguson is Community Planning Program Manager for the Community MT Division at the Montana Department of Commerce. Cody manages the Community Technical Assistance Program (CTAP) and helps guide community planning development efforts across the state.

John Houseal is Partner and Cofounder of Houseal Lavigne and is regarded as one of the nation's top urban planning professionals. John has directed a variety of planning, design, zoning, and economic development projects for hundreds of communities across the country. John has been a nationally featured speaker on topics relating to planning innovation, zoning, transportation, sustainability and the environment, economic development, context sensitive design, and visual communication.

## **Session Name:** Pedal to the People

**Credits-** 1

**Presenter(s):** Dave Hutchins

**Session Location:** Northwest Energy Building

**Session Description:** Community bike shops, sometimes called bike co-ops or bike kitchens, provide affordable, often free repairs and access to bicycles. By promoting bicycling in general and lowering the barrier for marginalized folks specifically to start biking, community bike shops play an essential role in creating healthy, equitable, and prosperous communities. Several cities and towns in Montana have community bike shops and there is growing demand for more. Butte's Bike Lab is perhaps the newest

of these and organizer Dave Hutchins will share his successes, challenges, model, and vision for the future.

**Presenter Bio(s):**

Dave is a biomimetic materials scientist, an environmental engineer, an educator, and an assembler of rusty bits. He spends his free time tinkering in the sacrifice zones, dreaming on two wheels, and documenting the process. He founded the community bicycle shop Bike Lab in Butte in 2018.

**Session Name:** Parks Planning with Community Liaisons, A Pilot Project for Community Engagement.

**Credits-** 1

**Presenter(s):** Addi Jadin, Matthew Madsen CHES & Susan Riggs AICP

**Session Location:** Butte Archives Building

**Session Description:** The City of Bozeman in Partnership with the Western Transportation Institute (WTI), Groundprint Consulting, and HRDC partnered and received a Safe Routes to Parks Equity grant. The pilot program designed and implemented a new style of community engagement that hired 3 community liaisons from underserved communities to help engage the community throughout the City's Parks, Rec, & Active Transpo planning process. Come hear the story, meet folks, and learn about new ways of planning and engagement

**Presenter Bio(s):** Addi is the Park Planning and Development Manager for the City of Bozeman, Montana. Addi began her career as a program manager at the Center for Democracy and Citizenship (Humphrey Institute of Public Affairs, University of Minnesota) focusing on youth civic engagement. After several years in rural and urban planning in Montana, Addi is happy to be involved in the community-building and place-making work of the Parks and Recreation Department. She envisions a welcoming and healthy park ecosystem.

Matthew Madsen, MPH, CHES: Research Associate, WTI. Matt has over 10 years of experience in the field of public health and is a staff lead on the intersection of transportation and public health at the Western Transportation Institute. He has extensive experience leading community-based projects and community engagement processes.

Susan Riggs, Principal/Owner, GroundPrint, LLC: Susan has uniquely experienced the public, private and non-profit sectors over the past 20+ years. After working as a planner for the City of Bozeman and an architecture firm she established GroundPrint, LLC in 2017 to focus on helping local governments and nonprofits with their community development goals.

---

**9:30-11:30AM**

**Session Name:** Tour: Restoring the Carpenter's Union Hall

**Credits-** 2

**Presenter(s):** Clark Grant & Mike Boysza

**Session Location:** Meet in the Finlen Hotel Lobby

**Session Description:** Join Clark Grant and Mike Boysza for a tour of the historic Carpenters Union Hall. Built in 1906, the Carpenters Hall is Montana's oldest labor temple and a center point of Butte labor history. Eight years of volunteer restoration work has brought the upper ballrooms of the Hall back into use, including most recently in the television series 1923. Clark Grant and Mike Boysza, members of the building's governing board, will detail the effort to renovate the Hall using grant funding and a broad



base of support from Butte community members.

**Presenter Bio(s):** Clark Grant is a creative musician, burgeoning builder, and stubborn collaborator. He co-founded the Butte America Foundation in 2013 to bring community radio station KBMF to life. He is a board member of the Carpenter's Union Hall and former Assistant Director of the Butte Archives, and is restoring several buildings in Butte and Walkerville through sheer force of will.

Mike Boysza is a lifelong union carpenter and longtime board member of Habitat for Humanity. He has been worn down by Clark's determination to restore the Carpenter's Union Hall, joined the KBMF board, tries to keep Clark from making carpentry mistakes, and fixing the ones he does make. In his spare time he likes to rest.

---

10:30-11:30AM

**Session Name:** Plan for Health, Session 1: What are the social determinants of health?

**Credits-** 1

**Presenter(s):** Matthew Madsen MPH, CHES, Garrett McAllister, AICP, Sarah Rosenberg, AICP

**Session Location:** Northwest Energy Building

**Session Description:** The social determinants of health (SDoH) are the conditions in which people are born, grow, work, live, and age, and the wider set of forces and systems shaping the conditions of daily life. The goal of this session is to introduce planners, developers, and those involved in community development to the SDoH while exploring the connectedness of the built environment and health.

**Presenter Bio(s):** Matt graduated from the Colorado School of Public Health with an MPH and has over 10 years of experience in the field of public health and is a staff lead on the intersection of transportation and public health at the Western Transportation Institute. He has extensive experience leading community-based projects and community engagement processes.

Sarah Rosenberg, AICP, is a Planner and the Historic Preservation Officer for the City of Bozeman. She joined the City in 2017 as a development review planner but has since taken over managing the Historic Preservation Program. Prior to working in Bozeman, she worked for municipalities in Colorado. She holds a Master of Science in Historic Preservation and a Master in Urban and Regional Planning from the University of Colorado Denver.

Garrett is a Senior Planner for Gallatin County, responsible for identifying and managing long-range planning projects. His experience as a planner in three different states is wide ranging, from development review and code enforcement in small-town Oregon to countywide land use planning in South Florida. He holds an MS in Environmental Studies from the University of Montana, with a focus on environmental policy and planning. Originally from Tucson, Arizona, Garrett lives in Belgrade, Montana with his wife and son.

**Session Name:** Outdoor Recreation Plans: A Multi-Jurisdictional Approach to Connecting Recreation Hubs, Clusters and Corridors

## Credits- 1

**Presenter(s):** Kathleen McMahon, FAICP & Diane Conradi

**Session Location:** Butte Archives Building

**Session Description:** Connectivity is a top priority for community members. They want safe travel routes between home to schools, parks and work. Shared use paths are an important recreation amenity for residents and visitors. To achieve a truly connected trail system requires coordination between multiple stakeholders as well as a complicated mix of revenue sources. Learn about recent legislation and communities that used a collaborative outdoor recreation planning approach to address these challenges.

### **Presenter Bio(s):**

Kathleen McMahon has 35 years of community planning experience. She has a Bachelor's Degree in Urban and Regional Planning from the University of Illinois and a Master's Degree in Educational Technology from George Washington University. She is a member of the Montana Association of Planners, a Fellow of the American Institute of Certified Planners, and Montana Economic Development Association.

Diane is an experienced attorney, founder and advisor to Whitefish Legacy Partners/Whitefish Trail, Montana State Parks Foundation, appointed member to the Montana Environmental Quality Council, Flathead Reservation Fish and Wildlife Commission, and Montana's first State Parks and Recreation Board. She is an innovator of recreation approaches on public lands, state trust lands and private lands from a practical, legal and policy perspective.

---

12:00-1:00PM

### Lunch & Keynote

Keynote Presentation: Perta Huertado, PhD - Planning with Foresight

Sponsored By



**Presenter Bio(s):** Petra (Stieninger) Hurtado is the Director of Research and Foresight at the American Planning Association, heading APA's research programs and foresight practice. In this role, she is responsible for expanding a future-focused research agenda, advancing planning practices that assist communities in navigating change, and developing APA's foresight practice to inform APA's strategic governance. Her areas of expertise and research include strategic foresight, urban futures and emerging technologies. urban sustainability, smart cities, nature-based solutions, and environmental psychology. In addition, Petra teaches a course on "community visioning with foresight" at the University of Maryland.

Prior to joining APA, she worked as an advisor, planner, researcher, and educator in the global urban sustainability arena. She has a Ph.D. in urban planning from the Vienna University of Technology, where she teaches on urban sustainability and environmental psychology. Additionally, she has been a guest lecturer at Harvard GSD, Loyola University Chicago and the

Universidad Tecnológica de Bolívar in Colombia. Petra has authored and co-authored multiple books, research papers, publicly funded reports, and articles and has presented as a keynote speaker and subject matter expert at numerous conferences around the globe.

---

1:30-2:30PM

Afternoon refreshments sponsored by



WGMGROUP™

Session Name: Planners and Housing Roundtable Discussion- Hosted by HUD

**Credits-** 1

**Presenter(s):** Allison Mouch AICP, Jennifer Olsen

**Session Location:** Finlen Hotel Ballroom

**Session Description:** Join this session, facilitated by HUD Region 8 Director Dominique Jackson, which centers on discussions about housing, land use planning and zoning. These expert panelists will exchange insights on balanced community development, affordable housing solutions, and the effects of zoning regulations on communities. They'll explore challenges and innovative approaches to create more sustainable and inclusive communities.

**Presenter Bio(s):**

Jackie Girard is the State Director of the U.S. Department of Housing and Urban Development's Montana Field Office. Ms. Girard is responsible for overseeing the field office coordination of outreach activities and program delivery to HUD customers, partners, and communities throughout the State of Montana. Through local community collaborations, Jackie leads HUD's efforts to support underserved communities, those who are homeless and houseless, access to affordable rentals, homeownership opportunities, housing quality, fair housing, and disaster recovery. She joined HUD on March 16th, 2020.

Prior to her work with HUD, Ms. Girard served as the Montana State Director of the federal agency AmeriCorps for over 14 years. She collaborated statewide with local communities on building capacity, developing leadership and strategic planning to resolve issues with affordable housing, independent living, healthcare, education, economic development, and disaster preparedness. She developed Senior Corps, AmeriCorps and VISTA national service projects and provided programmatic and fiscal oversight of large federal grant portfolios for Montana, Washington and Alaska.

Jackie is a certified federal Grants Manager, earned a bachelor's degree in Business Management from Montana State University, and served as an AmeriCorps VISTA member early in her career. Jackie is married to husband Mike with two fabulous kids and looking forward to getting kids through college.

Allison is one of seven partners with Orion Planning + Design, a multi-disciplined firm specializing



in the planning and design of communities of lasting value through place-based solutions and collaborative engagement. She has over a decade of professional planning and design experience in the public, private and non-profit sectors. Her areas of specialization include comprehensive plans, public engagement and outreach, code development, project management, mapping and analysis. She is an AICP certified professional planner and an active member of the American Planning Association (APA), immediate past-president of APA's Western Central Chapter (MT, WY, ND, SD), and currently sits on the Montana Association of Planners (MAP) Board of Directors. She holds a Bachelor's Degree in architecture from Miami University (Ohio), and a Masters in Urban and Environmental Planning from the University of Virginia in Charlottesville.

Kelly has more than 20 years of experience as an attorney and local government advocate. She focuses on collaboration between public agencies, the private sector, and elected officials with diverse backgrounds to provide creative, efficient, and effective leadership for Montana's communities. She has served as Deputy Director and General Counsel of the League since 2016. Prior to joining the League, Kelly served as Community Development Division Administrator and Special Projects Legal Counsel for the Montana Department of Commerce. Originally from East Helena, Kelly earned her Master's degree in Urban Planning and law degree from the University of California at Los Angeles.

Galen Steffens is the Community MT Division Administrator. Galen returned to the Department of Commerce after serving as the Water Quality Planning Bureau Chief at the Montana Department of Environmental Quality. Prior to her time at DEQ, Galen was the Community Planning Program Manager at the Department of Commerce and also previously worked as a City Planner for the City of Great Falls.

Galen grew up on a farm in Colorado and has lived in Montana for the past 20 years. She is a graduate of the University of Montana and is an avid backpacker and general all-around lover of the outdoors. Galen is passionate about making a difference in the state in which she lives, works and recreates. Galen lives in Helena with her two children, husband and dog.

Monica Plecker is the Planning Division Manager for the City of Billings and Yellowstone County. Specifically, the Division is part of the Planning and Community Services Department and she is responsible for overseeing daily operations related to current, long-range and transportation planning in Billings, Broadview and Yellowstone County. Monica graduated with a degree from James Madison University in Harrisonburg, Virginia. She has experience as both a public and private sector planner. Her interest include tax increment financing, public policy and long-range planning. Monica is a member of the American Institute of Certified Planners and is serving her second term as member of the Board of Director's for the Montana Association of Planners (MAP). She also represents the Roberts district for the Carbon County Conservation District.

---

1:30-4:00PM

**Session Name:** Plan for Health, Session 2: Skills for healthy community development

**Credits-** 2.5

**Presenter(s):** Garrett McAllister AICP, Sarah Rosenberg AICP & Matthew Madsen MPH, CHES

**Session Location:** Northwest Energy Building

**Session Description:** The session will break out into groups by topic and do a health impact assessment exercise which will include discussing topics such as transportation, housing, water, natural resources, and land use. After the breakout, the group will reconvene and talk through some guided questions

and suggest next steps of what our communities can do to incorporate health in all policies. It is recommended to attend the Plan for Health Session 1 to gain context on the social determinants of health.

**Presenter Bio(s):**

Matt graduated from the Colorado School of Public Health with an MPH and has over 10 years of experience in the field of public health and is a staff lead on the intersection of transportation and public health at the Western Transportation Institute. He has extensive experience leading community-based projects and community engagement processes.

Sarah Rosenberg, AICP, is a Planner and the Historic Preservation Officer for the City of Bozeman. She joined the City in 2017 as a development review planner but has since taken over managing the Historic Preservation Program. She also serves on the Montana Association of Planners board. Prior to working in Bozeman, she worked for municipalities in Colorado. She holds a Master of Science in Historic Preservation and a Master in Urban and Regional Planning from the University of Colorado Denver.

Garrett is a Senior Planner for Gallatin County, responsible for identifying and managing long-range planning projects. His experience as a planner in three different states is wide ranging, from development review and code enforcement in small-town Oregon to countywide land use planning in South Florida. He holds an MS in Environmental Studies from the University of Montana, with a focus on environmental policy and planning. Originally from Tucson, Arizona, Garrett lives in Belgrade, Montana with his wife and son.

**Session Name:** Tour: Trolley Tour of Butte

**Credits-** 2

**Presenter(s):** Led by Chamber of Commerce Tour Staff, Chris Fisk

**Session Location:** Meet in the Finlen Hotel Lobby

**Session Description:** The trolley tour lasts about 2 hours and is lead by local experts on the area and our colorful history. You'll learn about Butte's rich mining and cultural history, which dates back to the middle of the 19th century. Visitors will enjoy a tour through the National Historic Landmark District including the Copper King Mansion, Dumas Brothel, World Museum of Mining, Berkeley Pit Viewing Stand, Mai Wah Musuem, Clark Chateau, Montana Tech and much more.

**Presenter Bio(s):**

Chris Fisk will be your tour guide in Historic Butte Montana. He only gave us the facts, someone else took the liberty and necessity of adding a glimpse into this wonderful man.

Although Butte is not his hometown, his passion for it's history will have you thinking otherwise; Chris hails from the great community of Dillon, Montana, merely 60 miles down I-15. Prior to "The Great Retirement" in June 2022, Chris was a history teacher at Butte High School, and counselor for the Butte High School History Club, an organization of students dedicated to preserving Butte's stories and while being active participants at community events. For over 20 years Chris has been a trolley/tour guide for the Butte Chamber of Commerce, his "retirement" has given visitors to Butte more opportunities to experience his humor, animation, and insights into Butte's history.

In 2010 the Daughters of the American Revolution (DAR) recognized Chris with their National American History Teacher of the Year at Constitution Hall in Washington DC. In 2013 he received the Heritage Keeper award for the State of Montana from the Montana Historical Society, and was inducted into the Educators Hall of Fame at the University of Montana. While history is his passion, paranormal hauntings is how he fills his what little free time he has. Chris has been consulted, interviewed, and even starred in numerous national television shows: "Haunted Collector", "The Dead Files", "Codes and Conspiracies"

and most recently the Travel Channel's 8 episodes of "Ghosts of the Devils Perch".

Chris married Butte native and educator Becky Fisher 30 years ago, together they raised 2 beautiful daughters Hunter and Rosie. Over the years Chris and Becky have fostered 15 children, offering their love and support at various intervals of these children's lives.

---

3:00-4:00PM

## **Session Name:** Show me the money: Planning and partnerships for federal grants

**Credits-** 1

**Presenter(s):** Aaron Wilson AICP & Amanda Cooley

**Session Location:** Finlen Hotel Ballroom

**Session Description:** Federal funding for infrastructure and sustainability is at levels not seen in more than a generation. These projects can be transformative for communities, but to be successful and realize the full benefits of the investment strong partnerships are necessary. This session will describe efforts from three Montana communities to forge partnerships, navigate conflict and competing interests, get the support of local politics, and how to put coalitions to work promoting grant applications. Planners can and should be at the forefront of developing successful federal grants. Come learn how!

### **Presenter Bio(s):**

Aaron Wilson, AICP has served as the Infrastructure & Mobility Planning Manager for the City of Missoula since 2018, and currently oversees the Missoula Metropolitan Planning Organization, Missoula In Motion, and the City of Missoula's infrastructure planning activities. His focus in this position is currently figuring out how to make ambitious plans and goals a reality through funding, implementation, and creative project design. Prior to managing planning for Missoula's transportation issues, Aaron gained experience understanding how our natural and built environment systems interact through work on land use planning, open lands preservation, and wildfire research.

Aaron earned a BA in Ecology from Cornell University, and a Masters of Urban and Regional Planning from Portland State University. He is an AICP certified planner, and the current President of the Montana Association of Planners now the Montana Chapter of the American Planning Association!

Amanda Cooley, CFM, is the Planning Director for Powell County. She has been in the position for two years and this is her first job in the planning profession. In addition to planning, her work encompasses oversight on state and federal superfund sites, park and trail management and development, floodplain administration, and historic preservation. Prior to planning, she built and ran small businesses, primarily related to horticulture. She lives and works in Deer Lodge. She loves time outdoors, especially if she's climbing up, snowboarding down, or backpacking across mountain ranges.

Rebecca Shaw-Quinones (Keen-yo-ness), AICP, CGW has worked in planning and "planning adjacent" positions for twenty years. Rebecca started her career as director of rural public transit systems in Illinois and Montana (planning adjacent). She has worked as a planner for both Flathead and Lewis and Clark counties before moving over to the Department of Commerce. Currently, Rebecca is employed by Interstate Engineering as a planner and grant writer. In her spare time, Rebecca and her husband are avid trail runners and enjoy time in their vintage camper trailer, Little Red.

---



4:30-5:30PM

**Session Name:** Explore the Past: How Sanborn Fire Insurance Maps are used to interpret the evolution of our built environment

**Credits-** 1

**Presenter(s):** Kim Murphy Kohn B.A.

**Session Location:** Butte Archives Building

**Session Description:** The Sanborn Fire Insurance Company mapped 12,000 American cities between 1867 and 1970. They depicted commercial, industrial, and residential sections of cities and towns. Although created for the insurance industry, city planners, government and municipal agencies, banks, and public utilities also utilized the maps. Kohn's presentation will explain how historians and planners use this information in the context of research and documentation.

**Presenter Bio(s):** Kim Kohn joined the staff of the Butte Archives in 2011. She earned a B.A. in Historic Preservation from Mary Washington College and is currently a graduate student in the History Department at Montana State University. She has used Sanborn Maps throughout her career, but especially in writing National Register nominations in Virginia, Missouri, and Tennessee. The Sanborns are her favorite historic resource and she uses them daily doing research at the Archives.

**Session Name:** Sustainability: Resilient Butte - Sustainability, Health and Resilience Plan (SHARP): Climate Solutions for a Healthy Butte

**Credits-** 1, Required AICP Sustainability Credit

**Presenter(s):** Megan Terry PLA, SITES-AP, ASLA, Stephen Coe, PE, Lindsey Romaniello, AICP

**Session Location:** Finlen Hotel Ballroom

**Session Description:** Overview of the SHARP Plan and how its potential impacts on the Butte-Silver Bow Community. Discussion on Public Engagement Strategies, Stakeholders, Resilient Butte Committee and More

**Presenter Bio(s):** Megan has been in charge of multiple planning projects for a range of cities across Montana. Most notably, she is in charge of Master Plan for the Silver Bow Creek Conservation Area, which has earned international recognition. Her favorite projects are those that build sustainability, longevity, and resilience into the design and take into account impacts to the surrounding landscape. She is one of only two people in Montana that are certified as a Sustainable SITES Accredited Professional.

Stephen is a Senior Planner providing project management and technical expertise primarily focusing on developing planning documents. Stephen also serves as the contract project manager for the Butte-Silver Bow MS4 Stormwater Program. Stephen has experience in PROST planning, permitting, air quality, stormwater, and more. Stephen has planning experience in State Implementation Plans (SIP), Federal Implementation Plans (FIP), Nonattainment Area Redesignations and state climate action planning.

Lindsey is an associate planner for SE Group, a private consultant firm that focuses on community and recreation planning around the country. Her planning-related interests include community outreach/ conflict resolution, economic sustainability, and equitable housing development. She received her master's degree in urban planning from the University of Arizona, where she focused her studies on rural communities in the western United States. Lindsey has a public sector background and has worked as

a planner for several municipalities in the Rocky Mountain west, including Missoula County. During this time, she has focused on long-range planning and the implementation and creation of land use policy. She is currently a resident of Missoula, Montana and is the board secretary for the Montana Association of Planners.

## **Session Name: IIJA: Opportunities and Strategies for Communities Big and Small to Identify and Develop Competitive Grant Applications**

**Credits-** 1

**Presenter(s):** Spencer Dodge & Jon Schick, CEP

**Session Location:** Northwest Energy Building

**Session Description:** There are a number of discretionary grant programs, both pre- and post-IIJA, that are providing historic levels of funding to communities across the US. Connecting USDOT reviewers to local issues and successfully pitching a project in an application has always been a challenge.

This presentation seeks to expand on the funding opportunities available through the IIJA with a focus on how rural areas and smaller communities can compete at the national level and have their voices heard.

### **Presenter Bio(s):**

Spencer Dodge is a Strategic Project Manager in Helena, Montana. Prior to this position, he led the Southwest Chief & Front Range Passenger Rail Commission and its subsequent entity, the Front Range Rail District in Colorado. With extensive experience in stakeholder engagement, public involvement, and policy analysis, Spencer is adept in navigating complex infrastructure projects with multiple stakeholders. Spencer has managed grant applications and administration at a local and state.

Jon Schick is a transportation planner and project manager with broad-ranging experience in transportation and environmental planning projects, including long-range transportation plans, corridor planning studies, NEPA/MEPA environmental compliance documentation, biological resource inventories, Endangered Species Act compliance, geospatial analyses, and environmental permitting. Jon works with clients on environmental compliance of infrastructure projects throughout Montana.

---

6:30 pm - 8:00 pm

Montana Association of Planners Social Hour  
Cavalier Lounge, Finlen Hotel

Sponsored by



7:00 am 8:00 am

Registration and Networking

Morning Drink Bar Sponsored By

# Thursday, September 29



8:30-9:30AM

**Session Name:** Listening to Voices from the Past to Plan for the Future: Bozeman's Equity and Inclusion Plan and the importance of historical representation.

**Credits-** 1 AICP Required Equity Credit

**Presenter(s):** Sarah Rosenberg AICP, Nakeisha Lyon AICP, Cheryl Hendry, Crystal Alegria

**Session Location:** Finlen Hotel Ballroom

**Session Description:** The City of Bozeman is developing its first Equity and Inclusion Plan which will guide policy, programs, and partnerships to help create a place where everyone has the opportunity to thrive. Part of the effort includes partnering with the Extreme History Project to craft an inclusive historical narrative that conveys the city's diverse past through stories told by historically marginalized groups. We will present findings, give an overview of the plan, and discuss the value of this undertaking.

**Presenter Bio(s):**

Sarah Rosenberg, AICP, is a Planner and the Historic Preservation Officer for the City of Bozeman. She joined the City in 2017 as a development review planner but has since taken over managing the Historic Preservation Program. She also serves on the Montana Association of Planners board. Prior to working in Bozeman, she worked for municipalities in Colorado. She holds a Master of Science in Historic Preservation and a Master in Urban and Regional Planning from the University of Colorado Denver.

Nakeisha Lyon is an Associate Planner for the City of Bozeman, and serves as a co-lead in the development of the city's first Equity & Inclusion Plan. Nakeisha has her Bachelor's degree in Environmental Studies from Florida State University, and a Master's degree in Urban and Regional Planning from the University of Central Florida.

Cheryl Hendry holds an MA in History with a certificate in Museum Studies from the University of Delaware and a PhD in History from Montana State University. She has previously worked in Cultural Resource Management and is currently an instructor in History at Gallatin College, MSU and is the Advocacy and Engagement Manager for The Extreme History Project.



Crystal Alegria is the Co-founder and Director of The Extreme History Project, a public history nonprofit located in Bozeman, MT. Crystal has worked in the field of public history for the past twenty years at a variety of museums and heritage organizations, always with the goal of bringing history to the public and highlighting the stories of those that have been marginalized. She has written extensively on the history of Montana and produces The Dirt on the Past Podcast with co-host, Nancy Mahoney. She co-produced an Emmy-nominated documentary, The Story of Us: The Women Who Shaped Montana that premiered on Montana PBS in 2022. Crystal has served two terms on the Bozeman Historic Preservation Advisory Board and was a founding member of the Bozeman Preservation Advocacy Group. Crystal has a B.S. in Anthropology and a M.A. in History both from Montana State University.

## **Session Name:** TDM or Transportation Demand Management, it's not just for work, it's also for play

**Credits-** 1

**Presenter(s):** Matthew Madsen MPH, CHES & Katherine Auge

**Session Location:** Butte Archives Building

**Session Description:** Join the City of Missoula and the Western Transportation Institute as they share lessons learned from Transportation Demand Management (TDM) projects that work to improve transportation options, reduce congestion, and improve parking options for the outdoor recreations options that so many people love about Montana. From river access to winter sports pursuits, come hear stories of successful partnership programs to increase TDM at work and at play.

### **Presenter Bio(s):**

Matt graduated from the Colorado School of Public Health with an MPH and has over 10 years of experience in the field of public health and is a staff lead on the intersection of transportation and public health at the Western Transportation Institute. He has extensive experience leading community-based projects and community engagement processes.

Katherine Auge is the TDM Program Manager for the City of Missoula where she manages Missoula In Motion: a program aimed at increasing the use of sustainable transportation in the Missoula Valley. She is originally from Buffalo, NY and has a degree from Boston College.

---

**8:30-11:00AM**

## **Session Name:** Montana State Library GIS Training- Using and finding MSL GIS data and other sources to make online maps and perform basic analysis

**Credits-** 2.5

**Presenter(s):** Matt Trebesch & Jeff Hedstrom

**Session Location:** Northwest Energy Building

### **Session Description:**

The Montana State Library(MSL) will offer a hands-on course with our mobile computer lab that will instruct students how to find and use GIS open data sources and add them into maps, including how to find and add MSL GIS data. Course exercises will include creating online maps using ArcGIS Online and performing basic analysis using online tools. We will discuss the usage of cadastral data as well as other state government GIS data to create useful maps and perform quick analysis that planners often need to do. Furthermore, the course will include how to create a buffer around critical properties and export a list of properties within those buffered areas, how to filter and analyze selected data, how to

create basic applications from web maps, and creating exports of web maps to PDF documents.

**Presenter Bio(s):**

Matt Trebesch is a GIS Analyst at the Montana State Library (MSL). At the MSL, he manages a variety of statewide projects including the MSL “Flood Hub” and the now retired Montana Covid-19 dashboard and Hub. He also provides statewide support of MGIA (Formerly MLIA) grantees and applicants. His previous GIS experience includes GIS coordination with a municipal GIS department in Montana and GIS manager for a software vendor of 9-1-1 and other dispatching systems. He has a B.S. in Earth Science, Geology with a concentration in GIS from Montana State University, Bozeman.

Jeff Hedstrom is a GIS Analyst\Cadastral Theme Lead at the Montana State Library (MSL). He has worked at MSL for nearly four years and primarily focuses on maintaining the statewide cadastral and PLSS datasets. He also interacts with other local/state government GIS employees to assist in solving cadastral related problems. He has a B.S. in Earth Sciences with a concentration in GIS from Montana State University and a M.S. in GIS from Northeastern University, Boston.

---

10:00-11:00AM

**Session Name:** Land Use Legislation and Cases Affecting Montana: September 2021-September 2023

**Credits-** 1, AICP Required Law Credit

**Presenter(s):** Kelly Lynch JD, AICP

**Session Location:** Finlen Hotel Ballroom

**Session Description:** An overview of land use and planning legislation from the 2023 session.

**Presenter Bio(s):** Kelly has more than 20 years of experience as an attorney and local government advocate. She focuses on collaboration between public agencies, the private sector, and elected officials with diverse backgrounds to provide creative, efficient, and effective leadership for Montana’s communities. She has served as Deputy Director and General Counsel of the League since 2016. Prior to joining the League, Kelly served as Community Development Division Administrator and Special Projects Legal Counsel.

---

11:30AM-12:30PM

Lunch

MAP Membership Meeting



1:00-2:00PM

**Session Name:** Senate Bill 382

**Credits- 1**

**Presenter(s):** Andrew Hagermeier, AICP, Forrest Mandeville, AICP,& Kelly Lynch JD, AICP

**Session Location:** Finlen Hotel Ballroom

**Session Description:** The Montana Land Use Planning Act is the star land use legislation to come out of the 68th Montana Legislative Session. This transformational bill will “invert the pyramid” of how land use planning occurs in the communities to which it applies. Planners have less than three years to make the changes to update their comprehensive plans, zoning, and subdivision regulations. Implementation of this bill will be key. In this session, you will hear from three of the primary authors of the bill, who all happen to be planners. Kelly Lynch with the Montana League of Cities and Town, Andrew Hagermeier representing the Montana Association of Planners, and Senator Forrest Mandeville the bill’s primary sponsor. You will learn about ideas to implement the bill in cities, one option how counties can approach opting in, and what changes may come to the legislation over the interim. There will be plenty of time for questions.

**Presenter Bio(s):** Kelly has more than 20 years of experience as an attorney and local government advocate. She focuses on collaboration between public agencies, the private sector, and elected officials with diverse backgrounds to provide creative, efficient, and effective leadership for Montana’s communities. She has served as Deputy Director and General Counsel of the League since 2016. Prior to joining the League, Kelly served as Community Development Division Administrator and Special Projects Legal Counsel.

Forrest Mandeville, AICP, was born and raised in Columbus, MT. He has worked in the planning profession in Montana since 2007 when he was hired to work in the Stillwater County Planning Department. Since that time Forrest’s career has taken him from the public to the private sector. Forrest currently provides on-call planning services to a couple of counties and works on a variety of private planning projects throughout Montana. Forrest also served three terms in the Montana State House of Representatives and is currently serving in the Montana Senate where he worked on numerous land-use bills.

Andrew Hagermeier is the Senior Planner managing the long range planning and implementation section of Missoula County’s Department of Planning, Development, and Sustainability. Andrew is a member of the Montana Association of Planner’s Board of Directors, and is co-chair of the MAP Legislative Committee.

**Session Name:** Butte-Silver Bow 2023 Parks and Trails Master Plan and Plan Implementation

**Credits- 1**

**Presenter(s):** Stephen Coe, PE & Megan Terry PLA, SITES-AP, ASLA

**Session Location:** Northwest Energy Building

**Session Description:** Butte-Silver Bow recently completed a long over due update to it’s 2008 Parks Recreations Open Space and Trails (PROST) Plan. This comprehensive PROST plan includes near term (5-year) and future visioning (20-year) Capital Improvement Plans (CIP). This Session will review the successful drafting and adoption in to the BSB Compressive Plan. The presentation will end with looking forward at the implementation of the plan within BSB.

**Presenter Bio(s):** Stephen is a Senior Planner providing project management and technical expertise primarily focusing on developing planning documents. Stephen also serves as the contract project manager for the Butte-Silver Bow MS4 Stormwater Program. Stephen has experience in PROST planning, permitting, air quality, stormwater, and more. Stephen has planning experience in State Implementation Plans (SIP), Federal Implementation Plans (FIP), Nonattainment Area Redesignations



and state climate action planning.

Megan has been in charge of multiple planning projects for a range of cities across Montana. Most notably, she is in charge of Master Plan for the Silver Bow Creek Conservation Area, which has earned international recognition. Her favorite projects are those that build sustainability, longevity, and resilience into the design and take into account impacts to the surrounding landscape. She is one of only two people in Montana that are certified as a Sustainable SITES Accredited Professional.

---

**1:00-2:30PM**

**Session Name:** Underground Mine Tour (1)

**Credits-** 1.5

**Presenter(s):** Led by Ken Bliss, Mine Tour staff

**Session Location:** Option to meeting at the Finlen or at the Mine Tour site.\* (see note below)

**Session Description:**

Venture 100 feet underground to see the original shaft station and the Orphan Girl vein, one of the few exposed veins in North America that can be seen by the public. The tour guides lead you through the drift, sharing stories as you venture 100 feet into the 2700-foot-deep Orphan Girl Mine. Many other surprises wait for you at the 100-foot level.

**\*Note:** For those who sign up for this tour, there will be further communication in the weeks leading up to the conference regarding transportation. Transportation to the mine tour will be provided via bus/walking in uptown butte. However, if you would like to get to the tour site via personal means, that can be coordinated with the tour organizer.

**Presenter Bio(s):** Ken has been a guide with the World Museum of Mining since 2022. He is fascinated with history and an avid Lakers fan

**2:00-3:30PM**

**Session Name:** Underground Mine Tour (2)

**Credits-** 1.5

**Presenter(s):** Led by Michael Kopf, Mine Tour staff

**Session Location:** Option to meeting at the Finlen or at the Mine Tour site.\* (see note below)

**Session Description:**

Venture 100 feet underground to see the original shaft station and the Orphan Girl vein, one of the few exposed veins in North America that can be seen by the public. The tour guides lead you through the drift, sharing stories as you venture 100 feet into the 2700-foot-deep Orphan Girl Mine. Many other surprises wait for you at the 100-foot level.

**\*Note:** For those who sign up for this tour, there will be further communication in the weeks leading up to the conference regarding transportation. Transportation to the mine tour will be provided via bus/walking in uptown butte. However, if you would like to get to the tour site via personal means, that can be coordinated with the tour organizer.

**Presenter Bio(s):** Michael, WMM's Director of Grounds and Guides, has been with the Museum since 2011.