



2022 Conference Program



September 27-29

Double Tree Inn by Hilton
Downtown Billings



Conference Sponsors

Partner Level Sponsors



Our Core Values: Our Promise To You!

Client Commitment | Quality Solutions | Empowered Employees

How It All Started

Our roots date back to 1984 when President Emeritus Daniel McCauley partnered to form what is now Great West Engineering. Based in Helena Montana, the budding company quickly developed a reputation for client care and responsive service with the ability to secure funding to offset project costs. Since that time, the company has grown to close to 100 employees with locations in Montana, Idaho, and Washington. Much of the growth and success can be attributed to the original core values of client commitment, empowered employees, and quality solutions which the company still practices today.

Our Purpose

Provide a better quality of life by improving the world in which we work and live and creating a sense of community for our staff.



ALL EYES ARE ON YOU TO DELIVER SMART COMMUNITIES. WHAT WILL YOU DO?

Smart communities are not something that is off in the distant future. They're happening now. Thousands of jurisdictions are applying ArcGIS technology for planning and engineering, operational efficiency, data-driven performance, and civic inclusion.

Start your own smart community journey.

go.esri.com/eyes-on-smart



esri

THE
SCIENCE
OF
WHERE®

We add value by designing smart.

We have the skills and ability to tailor our approach to each situation, to deliver our best work.



FDR



MONTANA
State
Library

Mission

The Montana State Library (MSL) helps all organizations, communities, and Montanans thrive through excellent library resources and services.

The Montana State Library is committed to strengthening libraries and information services for all Montanans through leadership, advocacy, and service. The outstanding staff and partners of the State Library strive to meet this mission every day.

International library strategist Lorcan Dempsey challenges librarians to think about how we can collaborate to solve infrastructure challenges in ways that improve economies of scale, which then permit librarians and information professionals to focus more resources on innovation and opportunities for community engagement.

Through consulting services, education, and creative collaboration, we at the State Library focus much of our energy and creative resources to support the infrastructure on which our partners rely. And we challenge ourselves and our partners to be innovative collaborators in our communities. As a result, Montana libraries are better positioned to be their communities' choice for discovery and exchange of information and ideas. Our dedication to strengthening libraries and information services for all strengthens community life for all Montanans.



HELPING COMMUNITIES THRIVE

Our Firm

Orion Planning + Design (OPD) is a multi-disciplinary firm specializing in the creation of dynamic, inclusive, resilient communities that can adapt and thrive in a changing world. Our team of professionals has experience in nearly every aspect of local, regional, and state planning. We work coast-to-coast and internationally offering a variety of professional community planning and design services to government, private developers, landowners, and non-profits.

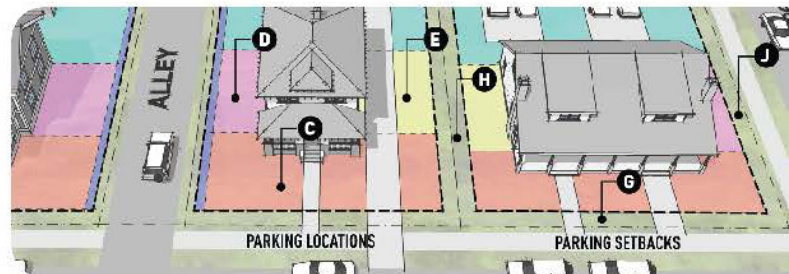
Our Approach

Using a holistically integrated team approach, OPD provides the highest level of service to our clients. Our processes engage and motivate, and our products inspire and enrich. OPD believes in collaborative planning and place-based, context-sensitive solutions. We facilitate locally driven processes and strong working relationships with staff, committees and boards. We distinguish ourselves from our competitors by:

- 1) **Building capacity.** We educate, train, and support our clients and communities so that they have the knowledge and confidence to implement plans, codes, and recommendations.
- 2) **Emphasizing implementation.** Our consulting services always include detailed guidance on how to get from vision to reality.
- 3) **Integrating plans and codes.** Our approach and experience focuses on implementing plans through local codes. We plan with coding in mind and our code products reflect plan priorities.
- 4) **Valuing volunteerism.** We respect the role of community volunteers and can boast significant time serving communities at home and abroad.

Our Services

OPD offers a variety of professional community planning and design services ranging from comprehensive plans, site design, and land development regulations to on-call staff assistance, mapping and analysis.



LOCATIONS:

Missoula, Montana
 Hernando, Mississippi
 Chattanooga, Tennessee
 St. Simons Island, Georgia
 Jacksonville, Florida
 Ormond Beach, Florida

Orion Planning + Design

1105 Village Way
 Missoula, MT 59802
 P 419-297-1604
www.OrionPlanningDesign.com

SERVICES:

Comprehensive Plans
 Master Planning
 Coding
 Transportation / Mobility
 Urban Design
 Landscape Architecture
 Site Design
 Visioning
 Education and Outreach



PERFORMANCE ENGINEERING

BREAKING NEW GROUND IN ENGINEERING EXCELLENCE

When you work with Performance Engineering, you are more than a client: you are a partner. We are there to make your project successful and help you realize your vision. Our talented civil engineering and surveying staff will guide you every step of the way, ensuring all guidelines are met and delivering a project that is built the right way the first time.

Platinum Level Sponsors

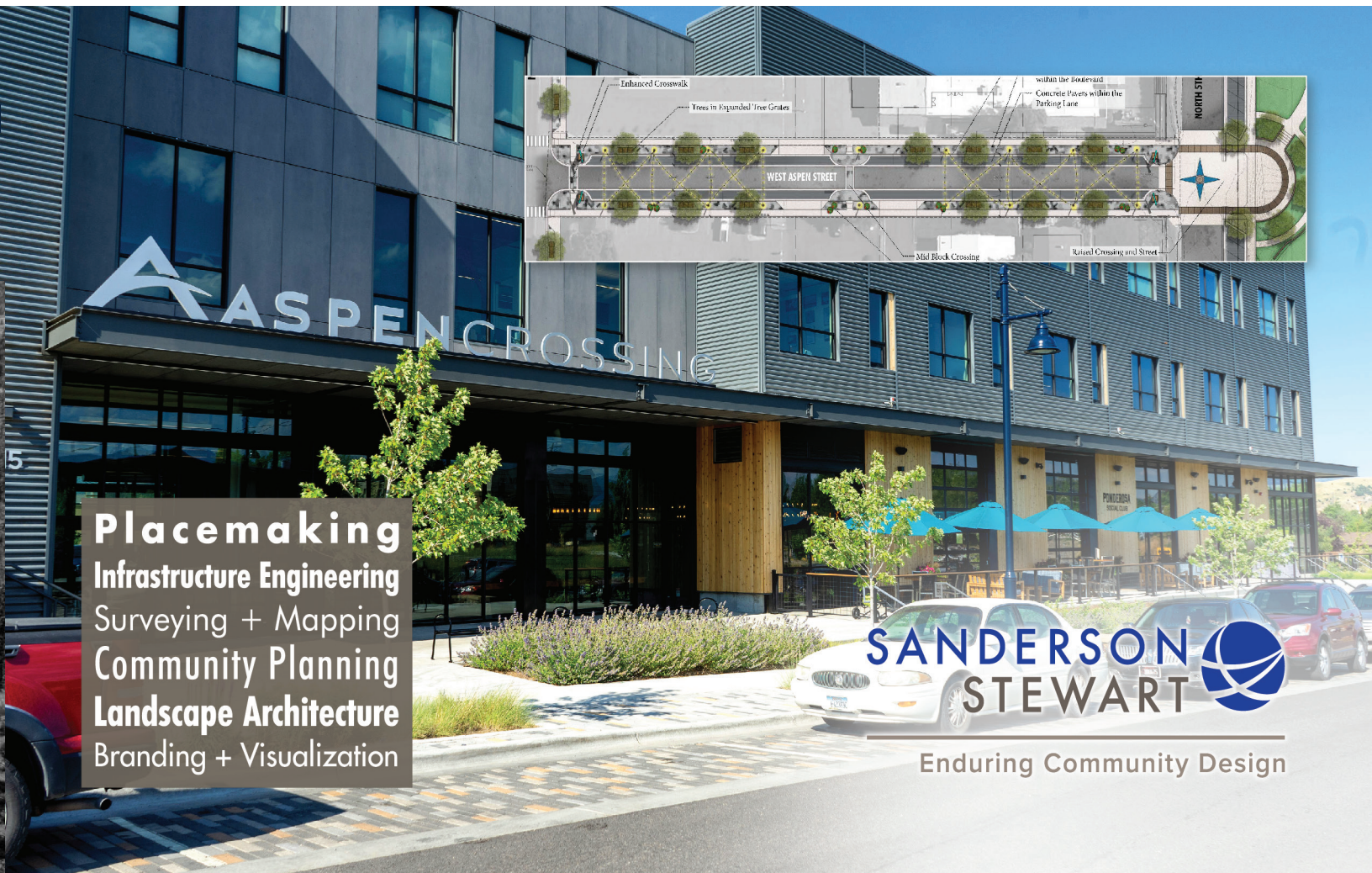


We solve problems
and *deliver* value.



INTERSTATE ENGINEERING

PROFESSIONALS YOU NEED
PEOPLE YOU TRUST



Placemaking
Infrastructure Engineering
Surveying + Mapping
Community Planning
Landscape Architecture
Branding + Visualization

SANDERSON
STEWART



Enduring Community Design

What We Do

Marty's experience in local government, specifically at the Director level means he understands the politics, processes, regulations and personalities that can affect and ultimately determine project entitlement. While each community has its own zoning, subdivision, design, and development regulations many commonalities exist. The key is knowing how the pieces work together, or against each other. Marty knows how to put the puzzle pieces together.

fall creek
PLANNING

Gold Level Sponsors



Montana APA Chapter Update

Letter from the MAP President

Hello,

At the Montana Association Planners Conference in Billings, MAP will begin our campaign to become an official Chapter of the American Planning Association. This campaign will require collecting signatures from 100 members of the American Planning Association who live in Montana.

The MAP Board of Directors began looking into the potential of forming a full Montana Chapter of the American Planning Association several years ago during our strategic planning retreat. We held discussions with our membership, evaluated the pros and cons, and made an announcement at our last conference regarding our intention to move forward with that chapter formation.

We have notified all the members of the West Central Chapter of APA of this opportunity to vote on the APA chapter formation and are now at the point where we have Montana Planners vote on whether we should form our own state chapter or not. While this might mean some logistical differences for MAP members, it will not affect our priorities, responsiveness, conference, or other ways we support our membership throughout the state. What it does mean is that we will have access to more resources through APA, and a simplified fee structure for Montana planners. Those of you who are both WCC and MAP members would now only have one membership fee to pay.

The Board of Directors has spent a considerable amount of time weighing our options and given our current challenges in Montana we feel this is the best foot forward. In addition to the resources provided by APA, we believe it will ultimately increase our capacity and simplify the behind-the-scenes work we do to run a professional organization.

Look for voting forms at the Conference registration table or talk to one of your Board members directly for more information. There is also a resource page on our website at <https://mtplanners.org/apa-chapter/>. We look forward to implementing this new change in the coming months and hope you will all join us in supporting the new structure for MAP. I sincerely believe that this is the first step in building a more impactful organization in a time of rapid change across Montana.

Sincerely,

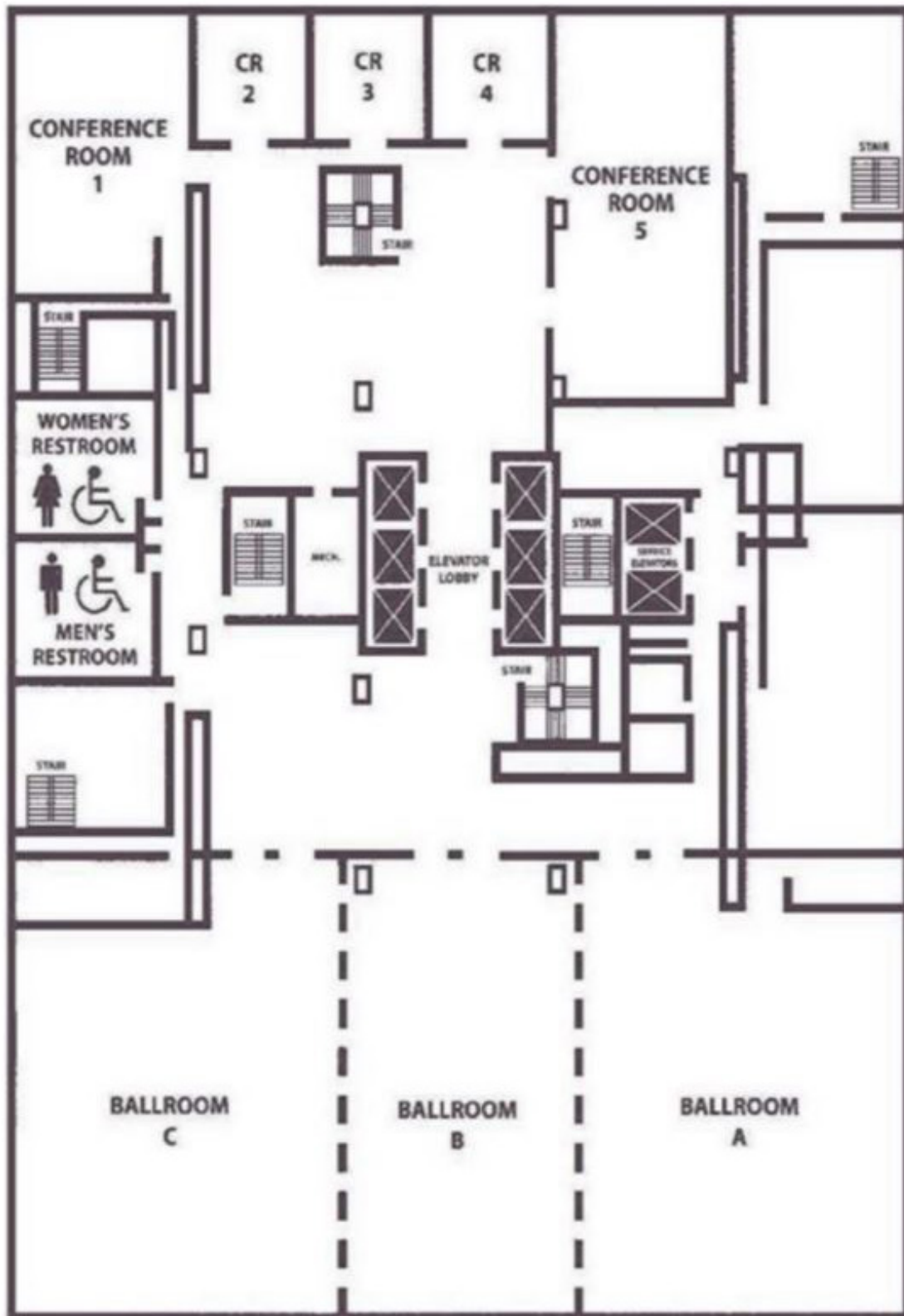
A handwritten signature in dark ink, appearing to read "Aaron Wilson", with a stylized flourish at the end.

Aaron Wilson, AICP

Board President, Montana Association of Planners

Conference Venue Map

3RD FLOOR MEETING FACILITIES





2022 Montana Association of Planners Conference

September 27-29, 2022

Double Tree Hotel, Billings, MT

Abbreviated Schedule

	Planning for Resiliency Ballroom B	Planning for Community Ballroom C	Planning for Transportation Conference Room 1	Mobile Tours
Tuesday September 27				
8:00-9:00	Registration & Networking, Foyer Breakfast Buffet Served from 8:00-9:30 Ballroom A			
9:00-10:30	Land Use Cases Affecting Montana: September 2021-September 2022 (CM: Law) Ballroom A			
10:30-11:45	Drought Mitigation & Management: Planning for Less	Land Use 101	What is TDM or Transportation Demand Management	Historic Downtown Walking Tour: Bars, Brothels and Bok Choy
11:45-1:00	Welcoming Remarks, Chris Kukulski City of Billings Administrator Lunch & Keynote Ballroom A YEP! Youth Engagement Planning Corrin Wendell AICP, Anna Laybourn AICP, Jessica Garrow AICP CM: Equity Credit			
1:15-2:30	Red Lodge Flooding: Planning in a Disaster	Writing Effective Staff Reports	Effective Multijurisdictional Project Coordination	Shiloh Conservation Tour
2:45-3:30	Building Our Way Out of This: How CLTs, Planners and Developers Can Ease Montana’s Housing Crisis	Modern Role of GIS in Today’s Planning		
3:30-3:45	Break: Snack Provided			
3:45-5:00	Billings West End Groundwater Investigation - Current and Future Impacts of Suburban Development	YEP! Youth Engagement: Putting tools into Practice	Integrating Transportation Demand Management (TDM) Strategies into Municipal Code	
5:30-7:00	MAP Social Hour - Appetizers and Drinks Location: Thirsty Street Brewing 3008 1st Avenue North catered by Market Deli			

Wednesday September 28					
7:00-8:00	Breakfast Buffet served 7:00-8:00 Ballroom A				
8:00-9:15	Navigating the Mitigation Planning Lifecycle: From Planning to Project Application and Implementation	Message-tested & Campaign-tested Ways to Talk About Zoning Reform		Mobile Tour: Billings First Neighborhood Bikeway: Connecting Residents to Everyday Needs	
9:30-10:45	New Planning Funds to Assist with the Redevelopment of Underutilized Brownfields Properties	The Tipping Point: When your Community is Ready for New Zoning and How to Help Staff Level-Up to a New Code	9:00 - 11:00 MTDH Accessibility Ambassadors Planning Meeting		Bright Side of the Tracks - Walking tour with Healthy By Design
11:00-12:15	Regional Hazard Mitigation Planning in Montana	Opportunities and Challenges for Planned Neighborhood Developments: A New Zoning Tool in Billings	Pop Up Traffic Calming: Temporary Solutions for Long-Term Change		
12:15-1:30	Welcoming Remarks Mayor Cole, City of Billings Lunch & Keynote Ballroom A Mark Fenton Sponsored by Montana Disability & Health Program				
1:45-3:00	TIF in Billings: How Three Local Districts Manage URDs and TIFDs	5th Avenue Corridor Study: Public Participation & Planning in a Pandemic		Inclusive Interdisciplinary walk Audit	
3:00-3:15	Break: Snack Provided				
3:15-4:30	School Zone: A New Model for Suburban Development in Montana	Subdivision Review Timelines Conference Room 5	Map Legislative Committee Meeting		
5:30-7:00	MAP Social Hour - BAR MT, 2314 Montana Avenue				

Thursday September 29				
7:00-8:00	Breakfast 22ed Floor, Follow Signs			
8:00-9:15	Building a Housing Pipeline Through Voluntary Incentives	Plenary Session with Mark Fenton: Putting Inclusive into Planning		
9:30-10:45	HUD Connections and Resources in Montana	Electronic Survey Review in Yellowstone County	Introduction to Accessibility Law (CM: Law)	Downtown Walking Tour: Lights of Broadway
11:00-12:30	Ethics Cases: Year in Review (CM Ethics)			
12:30-1:30	Lunch & MAP Membership Meeting & Closing Remarks, 22ed Floor, Follow Signs			

Detailed Conference Program

Tuesday, September 27

8:00 am – 9:00 am

Registration & Networking, Foyer
Breakfast Buffet Served from 8:00-9:00, Ballroom A
Sponsored By

fall creek
PLANNING

Morning Drink Bar Sponsored By



9:00 am - 10:30 am

Land Use Cases Affecting Montana: September 2021-September 2022 (1.5 LAW)
Planning for Community
Ballroom A

An overview of land use cases from September 2021 to September 2022 affecting planners in Montana

Presenter: Kelly A. Lynch, JD, AICP

Kelly has more than 20 years of experience as an attorney and local government advocate. As Executive Director of the Montana League of Cities and Towns, she focuses on collaboration between public agencies, the private sector, and elected officials with diverse backgrounds to provide creative, efficient, and effective leadership for Montana's communities.

Kelly joined the League as Deputy Director and General Counsel in 2016. Kelly previously served as the Community Development Division Administrator and Special Projects Legal Counsel for the Montana Department of Commerce, Deputy County Counsel for Santa Barbara County, and as an Associate at Richards Watson & Gershon in Los Angeles. Originally from East Helena, Montana, Kelly earned a Master's degree in Urban Planning and a law degree from the University of California at Los Angeles. She earned her certification from the American Institute of Certified Planners in 2015.

10:30 am - 11:45 am

Drought Mitigation & Management: Planning for Less Planning For Resiliency

Ballroom B

1.25 CM

Critical work is underway in Montana to address future drought risk now. Hear from the Department of Natural Resources and Conservation about how the update to the State's Drought Management Plan will improve drought monitoring, preparedness, response, and adaptation, and from FEMA Region 8 about out research underway to address how local communities can more effectively incorporate drought into the local hazard mitigation planning process to provide for improved drought resilience.

Presenter: Rob Pressly

Critical work is underway in Montana to address future drought risk now. Hear from the Department of Natural Resources and Conservation about how the update to the State's Drought Management Plan will improve drought monitoring, preparedness, response, and adaptation, and from FEMA Region 8 about out research underway to address how local communities can more effectively incorporate drought into the local hazard mitigation planning process to provide for improved drought resilience.

Presenter: Sara Hartley, State Hazard Mitigation Officer, MT DES

Presenter: Megan Burke, Ph.D., Water Resource Scientist, RESPEC

Land Use 101

Planning For Community

Ballroom C

1.25 CM

A broad overview of Montana land use statutes and their application presented by the Community Technical Assistance Program for new planners or planners new to Montana.

Presenter: Cody Ferguson, PhD

Cody Ferguson is Community Planning Program Manager in the Community MT Division at the Montana Department of Commerce. He directs the Community Technical Assistance Program which provides land use technical assistance, model documents, and trainings to Montana communities, the ARPA water and sewer infrastructure outreach program, manages the CDBG and MCEP planning grant programs, and sits on the state Drought and Water Supply Advisory Committee.

What is TDM or Transportation Demand Management?

Planning For Transportation

Conference Room 1

1.25 CM

TDM or Transportation Demand Management is the use of different strategies to develop options to encourage commuters and travelers to utilize multiple forms of sustainable transportation and get out of single occupancy vehicles. In this session we will learn about the different transportation options, partners, and policies that work together to create a local or regional TDM program. We will also hear from the communities of Billings, Bozeman, and Missoula about their current TDM efforts.

Presenter: Matthew Madsen MPH, CHES

Matthew Madsen is a public health professional with over 10 years of experience in the field focusing on community engagement on public health issues and the intersection of the built environment health. He manages the GoGallatin transportation demand management program and oversees the planning, installation, and evaluation of pop-up

traffic calming projects in Bozeman and around Montana. When he's not working, he can be found out and about in the mountains.

Presenter: Katherine Auge

Katherine is the TDM Program Manager for the City of Missoula where she manages Missoula In Motion: a program dedicated to increasing the use of sustainable transportation within the Missoula Valley. Katherine is originally from Buffalo, NY and attended Boston College.

Presenter: Candace Mastel, TDM Coordinator – City of Bozeman

Candace Mastel is a Planner with over 25 years in the fields of city and regional planning, campus planning, construction management, land development, and transportation planning. Having worked in the private and public sector over the years, she has gained a deep appreciation for both sides of any story and the “coming to the middle” for reaching compromise. After a career enhancing trip to the Netherlands in 2015 she decided to refocus her work pursuits in the field of transportation and mobility. The trip also encouraged her to change her lifestyle to become a year-round bike commuter. Outside of work her passions include mountain biking, snowboarding, hiking, reading, chocolate, and her family, friends and dogs

Mobile Tour: Bars, Brothels, & Bok Choy

Mobile Tour

1.25 CM

Discover Billings and Yellowstone County! Before the skate park and businesses, Billings' Southside was filled with bars, brothels and even a Chinatown. We'll wander the remnants of these establishments and bring back to life the stories of these large, and almost forgotten, communities. Tour departs hotel lobby.

Presenter: Lauren Hunley

Lauren E. Hunley has spent nearly 20 years in the museum field. Earning her Master of Arts in Learning & Visitor Services in Museums and Galleries through Leicester University in England, she's worked for both small museums and national museum service organizations. She is the author of 101 Museum Programs on a Shoestring Budget and has presented at numerous museum conferences. She is currently the Community Historian at the Western Heritage.

11:45 am - 1:00 pm

Lunch
Ballroom A
Sponsored by



Welcoming Remarks, Chris Kukulski City of Billings Administrator

Keynote: YEP! Your Engagement Planning

Youth Engagement Planning (YEP!) is a non-profit that creates customizable tools for youth participatory planning and project-based learning – involving more than 7,000 students (ages 5-26), educators, and community partners

nationwide. This workshop will introduce YEP! methodology, best practices, and project examples from across the country for developing young people's civic leadership, integrating younger voices into planning processes, and recruiting diverse voices into our profession.

Presenters: Corrin Wendell, AICP, Anna Laybourn, AICP, and Jessica Garrow, AICP

Corrin Hoegen Wendell, AICP

Executive Director

Corrin Hoegen Wendell, AICP, is the Director of Community Development & Planning for the City of Little Canada, Chair of the APA Women & Planning Division, and the Founder and Executive Director of YEP! Youth Engagement Planning, a non-profit organization that teaches youth about urban planning.

A practicing planner with over 15 years of extensive experience providing planning, architectural, and research services, Corrin's specialties include regional planning, land use, zoning administration, community engagement, and urban design. Corrin holds a Bachelor of Science in Architecture and a Masters of City and Regional Planning from the Ohio State University.

Corrin is passionate about giving back to the planning community and serves in various capacities for the APA Minnesota Chapter, an AICP (CPE) Certified Planning Exam Contributor, APA NPC Session Proposal Reviewer and Presenter, AICP Planning Accreditation Board (PAB) Site Visitor, Peer Reviewer for the Journal of Planning Education and Research, APA Divisions Council EDI Committee Task Force Chair, APA Equity CM Task Force, and a mentor to planning students and young professionals.

Anna Laybourn, AICP

Director of Collaboration

Anna is a Principal at Design Workshop, an urban design, planning, and landscape architecture firm with offices in Aspen, Colorado, and five other cities. Anna's diverse experiences in community, regional, and land planning is united by a focus on people and the planet. She forges application of natural and social sciences for projects such as parks and open space master plans, transportation infrastructure urban design, resilient neighborhood plans, and development proposals.

Anna specializes in establishing innovative processes for public engagement and has a reputation for her commitment to building equity for underserved populations through participatory design shaping physical environments. The power of youth to share a different perspective, envision possibilities, and be champions of change is a force she seeks to instill in the profession and communities. On this topic, she has been a featured speaker at the Cornell Institute for Healthy Futures summit and received honors such as an Award of Excellence in Research from the American Society of Landscape Architecture.

Anna currently serves as Vice-Chair of APA's Small Town and Rural Division, Board of APA Colorado and Awards Program Chair,

Jessica Garrow, AICP

Jessica currently serves as Chair of APA's Small Town and Rural Planning Division and is a member of APA's Legislative and Policy Committee and the Women and Planning Division. Jessica has presented at state and national planning conferences on affordable housing regulations, the sharing economy, comprehensive planning, and transportation mitigation.

For 13 years, Jessica worked as a planner for the City of Aspen, CO, including as the Community Development Director. It was there that she became passionate about mentorship and ensuring youth are engaged in shaping the places they live. To that end, all the planning efforts she led during her tenure had an element focused on engaging youth – from pre-school to high school. As the lead planner on the 2012 Aspen Area Community Plan, Jessica focused on ensuring an equity element, that included ensuring quality childcare and education opportunities for people of all ages, which was a key part of the plan.

Jessica is an avid hiker, skier, and outdoor enthusiast. She enjoys being outdoors and reading with her 6-year old daughter and her husband of 10 years. When not outdoors or working, she is a fiber artist and runs a small business, Hazel Mountain Studios.

1:15 pm - 2:30 pm

Red Lodge Flooding: Planning in a Disaster Planning For Resiliency

Ballroom B

1.25 CM

Red Lodge and the surrounding region experienced historic flooding in June of 2022. Three months later, the Community and surrounding area continues to struggle through challenges of repairing impacted public infrastructure and private property damage. This presentation will provide insights into disaster response in the immediate aftermath of the flood and long-term needs. We'll share personal stories, photos and aerial imagery to highlight the magnitude of the disaster and the need for a long-term response. We will highlight opportunities and challenges of working with state and federal agencies in planning for recovery and resilience moving forward amidst increasing fragility.

Presenter: Brent Moore, AICP

Brent Moore, AICP, is Regional Vice President for Interstate Engineering. Having lived in Red Lodge 16 years, Brent has completed numerous projects throughout the community, most recently related to Red Lodge flooding in June of 2015. He has a Masters in Urban Planning from Florida State University.

Presenter: Courtney Long

Courtney Long is the Planning Director and Floodplain Administrator for the City of Red Lodge. Prior to becoming a Planner her experience and education focused on natural resource conservation, having worked with local, federal and state agencies and NGOs. She holds a Bachelor of Science in Biology and Environmental Science from Appalachian State University and a Graduate Certificate in Conservation Planning from the University of Montana.

Writing Effective Staff Reports Planning For Community

Ballroom C

1.25 CM

The 2021 Legislature passed SB 174, adding the requirement that conditions of approval must be specific, documentable, and clearly defined, when mitigating impacts to primary review criteria. Further SB 174 requires the local governing body to identify the regulations and statutes that form the basis of their decision. This workshop is intended to provide planning department staff with tips and tools on how to write effective staff reports that comply with Montana law.

Presenter: Karen Alley, J.D.

Karen Alley is MACo's Associate General Counsel, specializing in land use law. Karen spent 10 years as an attorney in Havre, MT. In that time, she engaged in general private practice, criminal defense, and as a prosecutor. Karen was the Hill County Attorney prior to moving to MACo. Karen is a native of Townsend, MT and spends her free time running the trails around Helena.

1:15 pm - 3:30 pm

Effective Multijurisdictional Project Coordination Planning For Transportation

Conference Room 1

2.25 CM

How does a project go from an idea in someone's head to inclusion in a long range plan to being scoped and

nominated for funding to design/engineering to construction? What are the opportunities for public involvement along the way? This moderated roundtable discussion will explain current practices and identify gaps in the process/opportunities to make sure projects are meeting community goals, especially as they relate to non-motorized safety, mobility, and accessibility.

Presenter: Ben Weiss

As Senior Planner and manager of the Bicycle/Pedestrian Program for the City of Missoula, Ben Weiss has spent the last decade helping implement policies and plans aimed at improving the conditions for and increasing the numbers of people biking, walking, and rolling. He strives to coordinate efforts across various local and state agencies to ensure the transportation network is safe, comfortable, and convenient for all. Ben likes to spend his free time on the river with his family.

There will be additional panelists for this session, including representation from MDT.

Shiloh Conservation Tour

Mobile Tour

1.25 CM

Shiloh Conservation Area is a storm drain treatment facility constructed in 2014 to pilot contaminant removal through wetlands. Eventually, the city will be required to remove certain contaminants before stormwater is discharged to the Yellowstone River. There are several methods to treat stormwater but we did not have enough data on performance to plan for when those regulations take effect. This facility has been operating well but has provided us some much needed information that will be used to meet future regulations.

Presenter: Tyler Westrope, PE

Tyler Westrope has been an engineer with the City of Billings for the past 17 years. At the City of Billings Tyler's work is focused on general project management with an emphasis on stormwater specific projects, stormwater infrastructure master planning, project approvals and stormwater policy development. Tyler enjoys working within the statewide stormwater community to further his knowledge as he continues to improve planning and policy to ensure responsible development occurs within the City of Billings.

2:45 pm - 3:30 pm

Building Our Way Out of This: How CLTs, Planners, and Developers Can Ease Montana's Housing Crisis Planning For Resiliency

Conference Room 5

1.25 CM

Introduce the community land trust model, how it creates permanently affordable homes and its versatility for meeting the needs of a community. Discuss ways CLTs, planners, and private developers can streamline processes to create more CLT homes in Montana. Discuss how affordability restrictions can be used by planning offices to help ensure new homes are accessible to local workers. Share how density incentives can dovetail with CLT restrictions to create permanent affordability.

Presenter: Hermina Harold

Hermina worked at NMCDC, Montana's longest-running CLT organization, for ten years. She co-managed development of a commercial food hub building, establishing Burns Street Center's neighborhood food programs, and worked with homeowners. Hermina collaborates with civic organizations, non-profits, city and county planning offices, and others to leverage resources and build homes for low- and moderate-income Montanans. She is passionate about building vibrant and equitable communities.

Presenter: Bill Henry

Bill provides support to current and prospective Trust Montana homeowners, stewards properties around the state

to ensure they remain permanently affordable, and coordinates new projects in collaboration with the Board and the Director. Bill graduated with an M.S. in Community and Environmental Planning from UM. He has worked with the Montana Food Bank Network and has experience working for local government, as an employment professional, and as a general contractor..

The Modern Role of GIS in Today's Planning Department Planning For Resiliency

Planning For Community

Ballroom C

1.25 CM

The last 10 years have seen an enormous change in many fields of information technology, including geospatial. Planning professionals now have unprecedented access to content, tools, and analysis through web-based mapping. This new Web GIS pattern empowers planners to make better, more sustainable decisions without being GIS experts or investing substantial resources in training or infrastructure. This session will examine how several cities are leveraging GIS in their planning practice. The purpose is to show how other planners are solving planning & housing problems with GIS today in new, innovative ways.

Presenter: Keith Cooke

Keith is the Industry Manager for Planning and Community Development at Esri. A graduate of Auburn University, he's been a GIS professional since 1994 and has worked as a planner and GIS manager at the regional and municipal level in Alabama and North Carolina. Prior to this role, he was an account executive at Esri for 15 years working with over 100 local governments. He is a frequent speaker at GIS, community planning, and economic development events and an active member of the APA.

3:30-3:45

Afternoon Drink bar and Snack Break Sponsored By

SANDERSON STEWART 

3:45 pm- 5:00 pm

Billings West End Groundwater Investigation - Current and Future Impacts to Suburban Development Planning For Resiliency

Ballroom B

1.25 CM

West Billings groundwater conditions have been studied for more than a decade as agricultural land has been developed. A new groundwater investigation in coordination with the MBMG and City of Billings is currently underway to assess the impacts to existing and future development's access to drinking water and use of waste water systems because of decreasing groundwater quantity and quality in the area. Some existing subdivisions are already seeing well levels drop and water quality decrease.

Presenter: Elizabeth Meredith Hydrologist

Elizabeth Meredith is a professor and hydrologist with the Montana Tech and the Montana Bureau of Mines and Geology (MBMG). She is leading a current groundwater investigation in coordination with the MBMG and City of Billings of the western area of Billings both inside and outside the City Limits. Professor Meredith has been teaching and conducting research at Montana State University Billings but is affiliated with the Montana Bureau of Mines and Geology. She has authored many publications.

Presenter: Boris Krizek Environmental Engineer

Boris Krizek is the Environmental Engineer for the City of Billings Environmental Affairs Division of the Public Works Department. He has worked for the City for more than 20 years overseeing the City's state and federal environmental permitting, stormwater management regulations for development, and other City system permitting.

Presenter: Jon Reiten Hydrologist

Jon Reiten is a professor and hydrologist with Montana Tech and the Montana Bureau of Mines and Geology (MBMG). He has been a professor at Montana Tech since 1985. He has conducted extensive research around Montana, including on initial research on the hydrogeology of the west Billings area in 2002 and updates to the modeling used for the west Billings area in 2019.

YEP! Youth Engagement Planning: Putting Tools into Practice Planning For Resiliency

Planning For Community

Ballroom C

1.25 CM

Are you interested in integrating youth into your organization's planning processes or into a specific initiative? Are you committed to building lasting connections with historically marginalized communities, while also contributing to the diversity of our profession? This workshop will provide the theoretical underpinnings to approach both goals, while also providing a problem-solving forum for the immediate practical application in your own community.

Explore case studies from across the country and jump into implementing YEP!'s award-winning methodology for engaging students in planning and integrating youth input into planning processes within your community.

Youth Engagement Planning (YEP!) is a non-profit that creates customizable tools for youth participatory planning and project-based learning – involving more than 7,000 students (ages 5-26), educators, and community partners nationwide. This workshop will introduce YEP! methodology, best practices, and project examples from across the country for developing young people's civic leadership, integrating younger voices into planning processes, and recruiting diverse voices into our profession.

We will touch on principles for customizing your approach and content for age 5 versus 15 versus 25; tips for partnering with school districts; and hard-earned lessons in what works and what doesn't. We will then break into implementation small groups.

Participants are encouraged to come with both general questions and upcoming engagement opportunities in mind. Our goal is for every participant to leave with an action plan for their own community.

Presenters: Corrin Wendell, AICP, Anna Laybourn, AICP, and Jessica Garrow, AICP

Please see today's Keynote information for Bio's.

Integrating Transportation Demand Management(TDM) Strategies into Municipal Code Planning For

Conference Room 1

1.25 CM

Integrating TDM into municipal code is essential to shifting a community's travel habits. Not only should TDM be considered in the built environment when a new development is proposed, there are also programmatic strategies aimed to educate and encourage the use of transportation options that should be incorporated. Learn what Missoula, Bozeman and other case studies throughout the country are doing to embed TDM into requirements for new developments, parking & employers.

Presenter: Katherine Auge

Katherine is the TDM Program Manager for the City of Missoula where she manages Missoula In Motion: a program dedicated to increasing the use of sustainable transportation within the Missoula Valley. Katherine is originally from Buffalo, NY and attended Boston College.

Aaron Wilson AICP

Aaron Wilson is the Infrastructure & Mobility Planning Manager for the City of Missoula, where he oversees the Missoula Metropolitan Planning Organization, Missoula In Motion, and various other transportation and infrastructure planning projects. His focus in this position is currently figuring out how we make ambitious plans and goals a reality. Prior to concentrating on Missoula's many transportation issues, Aaron gained experience understanding how our natural and built environment systems in

Presenter: Elyse is the Active Transportation Planner with the Billings/Yellowstone County Metropolitan Planning Organization. She manages biking and walking planning efforts, promotes active transportation via programs like the Commuter Challenge, and develops grant applications to secure funding for biking and walking projects. Prior, Elyse worked in the public health and non-profit sectors. She holds a BA from Tulane University in Environmental Studies and Spanish and a minor in Urban Studies.

5:30 pm- 7:00 pm

Montana Association of Planners Social Hour
Appetizers and Drinks
Location: Thirsty Street Brewing, 3008 1st Avenue North
Catering by Market Deli

Sponsored By



Wednesday, September 28

7:00 am – 8:00 am

Breakfast Buffet Served from 8:00-9:00, Ballroom A

Sponsored By



Morning Drink Bar Sponsored By



8:00 am - 9:15 am

Navigating the Mitigation Planning Lifecycle: From Planning to Project Application and Implementation

Planning For Resiliency

Ballroom B

1.25 CM

Hazard mitigation planning provides state and local communities the opportunity to reduce loss of life and property by minimizing the impact of disasters. Participants will learn about updates to FEMA's state and local mitigation planning policies, technical assistance FEMA and other partners can provide for applying for funding and implementation, and local community perspectives on these resources

Presenter: Logan Sand

Logan Sand is the acting Senior Community Planner for FEMA Region R8's Mitigation Division. Logan manages the Mitigation Planning Program, and assists state, tribal, and local governments with natural hazard mitigation and climate adaptation planning. He holds a Master's of Urban and Regional Planning degree from the University of Colorado Denver.

Strategies to build the public's comfort with pro-housing zoning reforms

Planning For Community

Ballroom C

1.25 CM

After decades of inaction on housing and zoning, ambitious pro-housing policies are sweeping the nation, from Spokane, WA, to Minneapolis, MN, to Charlotte, NC. Instead of surrendering to "Not In My Back Yard" NIMBYism, local governments are working strategically with abundant housing advocates and thoughtfully engaging their communities to create political will for much-needed reforms. Hear from the Welcoming Neighbors Network, a confederation of state and local pro-housing organizations, about the key ingredients for successful reforms – how to talk about pro-housing zoning policies, how to collaborate with local advocates, and how to ensure public comment processes elevate representative voices across your communities, not just the usual suspects. This session is for any MAP members who want their local comprehensive planning and rezoning processes to be more impactful and less exasperating.

Presenter: Henry Honorof

Henry Honorof has advised presidential campaigns and congressional offices on housing policy, helped pass statewide abundant housing policy as a citizen lobbyist, and co-founded a local pro-housing advocacy organization that successfully legalized triplexes, fourplexes, deed-restricted six-plexes, cottage courts, and townhouses on every residential lot in Portland, Oregon. In his current role as director of the Welcoming Neighbors Network, Henry supports the cross-country collaboration of America's leading pro-housing organizations and provides consultation and incubation to rising abundant housing organizations and advocates in cities and states experiencing the latest wave of housing shortages.

Presenter: Nathan Dugan

Nathan Dugan is the President and Co-Founder of Montana's first and only organized pro-housing organization, Shelter WF - based in Whitefish. He has led a successful grassroots campaign to re-legalize accessory dwelling units across all residential zones in Whitefish. He is a member of the governor's Housing Advisory Council and is actively advocating for housing policy changes at the state level that will produce an abundant supply of affordable housing throughout the state.

8:00 am - 10:45 am

Billings' 1st Neighborhood Bikeway: Connecting Residents to Everyday Needs Mobile Tour

Mobile Tour

2.5 CM

Explore Billings' 1st neighborhood bikeway! Neighborhood bikeways (aka bike boulevards) are low-volume, low-speed, streets where bicycle traffic is prioritized. We will discuss the elements that make a successful neighborhood bikeway and the advantages of these types of routes.

There will be a limited number of bikes to borrow. Participants are encouraged to bring their own. Bring money for a snack; we will stop at the famous Carmel Cookie Waffle.

Presenter: Elyse Monat

Elyse is the Active Transportation Planner with the Billings/Yellowstone County Metropolitan Planning Organization. She manages biking and walking planning efforts, promotes active transportation via programs like the Commuter Challenge, and develops grant applications to secure funding for biking and walking projects. Prior, Elyse worked in the public health and non-profit sectors. She holds a BA from Tulane University in Environmental Studies and Spanish and a minor in Urban Studies.

Presenter: Dakota Martonen P.E., City of Billings Public Works, Engineering Division

9:30 am – 10:45 am

New planning funds to assist with the redevelopment of underutilized Brownfields properties

Planning For Resiliency

Ballroom B

1.25 CM

In October, DEQ's Brownfields Program will receive a \$2 million state-wide Brownfields assessment grant. This grant will provide Phase I & II ESAs, hazardous building materials inspections, and planning assistance for blighted and underutilized properties. DEQ would like to provide examples of various Brownfields assistance tools and redevelopment success stories. DEQ's Brownfields team would also like to openly discuss on how to best utilize this new planning funding to facilitate redevelopment

Presenter: Jason Seyler

Jason Seyler, the Brownfields Coordinator for the MT DEQ since 2009, enjoys finding creative solutions for non-profits, local communities, and developers to assess and cleanup underutilized properties. Jason has assisted with the cleanup and redevelopment of challenging properties such as rail yards, landfills, gas stations, and historic structures. Jason has a Master's degree in Environmental Science and Engineering from Colorado School of Mines. Jason previously served in Peace Corps-Africa.

The Tipping Point: When Your Community is Ready for New Zoning And How to Help Staff Level-Up to a New Code

Planning For Community

Ballroom C

1.25 CM

Billings Planners (Nicole Cromwell and Karen Husman) will review the community lead-up to the kick-off of a Zoning code renewal (45+ year old Zoning code) in 2017 (Project ReCode), and how Planning staff managed the change process – with internal and external “customers”.

Presenter: Nicole Cromwell, AICP

Nicole Cromwell is the Zoning Coordinator for the City and County Planning Division in Billings, MT & a member of the Planning Division since 2000. She has been instrumental in developing & implementing several zoning & land use code changes that build better neighborhoods ensuring compatible urban design. She received her training as a citizen planner & land use specialist for non-profit organizations on the east coast working with communities on regional & watershed level issues.

Presenter: Karen Husman

Karen Husman is the Planner I Team Leader for the City and County Planning Division in Billings, MT. She started her planning career in the City of America Canyon, CA in 1997 and moved to Montana in 2002 to serve with the Planning Division as a Planning Clerk. In 2005, she was promoted to Planning Assistant and then to Planner I in 2013. She currently leads a team of three planners working with the daily ebb and flow of all types of land use applications for Billings & Yellowstone County.

Presenter: David Goodridge

Dave Goodridge, founder of Good Ridge Real Estate, graduated from Billings Skyview High School in 1991 and then attended Cheyenne Aero Tech in Wyoming to obtain Airframe and Powerplant certificates. After working in the aircraft maintenance industry, Dave also obtained a private pilot's license. In 1994, Dave was given the opportunity to run a restaurant delivery business in Vancouver, BC, Canada. It was this opportunity that broadened Dave's career path from just aviation to the business world.

Presenter: Randy Hafer

Randy Hafer, cofounder of High Plains Architects, is an architect, developer, and thought leader committed to environmental sustainability, urban revitalization, and historic preservation. Since founding the firm in 1999, High Plains has completed 11 certified historic tax credit projects, 13 LEED Platinum Certified projects, and one Living Building Challenge certified project, Montana's first.

The Bright Side of the Tracks- A Walking Tour with Healthy By Design

Mobile Tour

1.25 CM

Bring your best walking shoes and join the manager of the Healthy By Design's Coalition for a walking tour around the South Side Neighborhood! We will highlight various placemaking and revitalization projects designed to highlight the Bright Side of the Tracks. Learn about this neighborhood's unique and complex history and how our Coalition worked with planners, engineers, artists and residents alike to make the neighborhood a healthier, more vibrant place.

Presenter: Eden Sowards, CHES

Eden Sowards is the Community Health Improvement Manager working on behalf of the Healthy By Design Coalition. She has a Bachelor's degree in Health Promotion from MSU-Billings in 2013 and worked 6 years with the health department, working with the coalition to implement the Gardeners' Market and ParksRx. She started managing Healthy By Design in March 2022 and looks forward to moving along the work to create a healthier and more vibrant Yellowstone County.

11:00am – 12:15 pm

Regional Hazard Mitigation Planning in Montana Planning For Resiliency

Ballroom B

1.25 CM

Montana Disaster and Emergency Services is developing three regional hazard mitigation plans that will cover all counties, municipalities, and Tribal nations in Montana, enabling communities to mitigate risk to natural hazards

and access funding for mitigation projects from FEMA. Participants will learn about the benefits of hazard mitigation planning, hear from local government about their involvement in the regional HMP process, and explore what role planners and other key stakeholders play.

Presenter: Rob Pressly

Rob Pressly is a Community Planner with FEMA Region 8's Mitigation Division, providing technical assistance to local communities, Tribes, and states on developing hazard mitigation plans and strategies that reduce risk, enhance resiliency, address climate change, and integrate equity. Rob holds a Master of Urban Planning degree from the University of Michigan and bachelor's degree from the University of Richmond.

Planned Neighborhood Developments: A New Zoning Tool in the City of Billings as part of Project Re:Code Planning For Community

Ballroom C

1.25 CM

Hear from Billings Planning Manager Monica Plecker, and Professional Engineer in the private sector, Craig Dalton as they critique of a newly implemented zoning tool in Billings. Craig and Monica have worked on opposite sides of several developments in Billings and will give a candid overview of the tool, what is working and what may be unintended consequences.

Presenter: Monica Plecker, AICP

Monica Plecker is the Planning Division Manager for the City of Billings and Yellowstone County oversees division operations. She has 11 years of planning experience in various capacities in Yellowstone County and has worked in both private and public sector planning. She is a member of the American Institute of Certified Planners (AICP) and is a current board member for the Montana Association of Planners. She was recognized by the Billings Gazette in the 2020 class of 40 under 40.

Presenter: Craig Dalton, PE

Craig Dalton is a Project Manager for Performance Engineering. Craig has over 10 years of experience in civil and water resource engineering, with a strong background in land planning and development, stormwater hydraulics/hydrology, municipal infrastructure design, and cost estimating. Mr. Dalton also possesses extensive experience with permitting and regulatory structures, successfully designing and permitting over 50 land development projects in the Billings area.

Pop-up Traffic Calming - Temporary Solutions for Long-Term Change Planning For Transportation

Conference Room 1

1.25 CM

The WTI traffic calming program partners with the City of Bozeman, rural communities & BikeWalk Montana to engage residents and staff in the process of designing and installing solutions to address traffic concerns, uncontrolled intersections, pedestrian/cyclist crossings, and placemaking. Projects are temporary and utilize planters, delineators, paint, and street art to achieve goals. The session will focus on project planning, implementation, partnerships, evaluation, and lessons learned.

Presenter: Matthew Madsen, MPH, CHES

Matthew Madsen is a public health professional with over 10 years of experience in the field focusing on community engagement on public health issues and the intersection of the built environment health. He manages the GoGallatin transportation demand management program and oversees the planning, installation, and evaluation of pop-up traffic calming projects in Bozeman and around Montana. When he's not working, he can be found out and about in the mountains.

12:15 pm – 1:30 pm

Lunch

Ballroom A

A special thanks to the Montana Disability and Health Program for sponsoring Mark Fenton as our Keynote Speaker



**MONTANA
DISABILITY &
HEALTH PROGRAM**

Welcoming Remarks, Mayor Cole City of Billings

Keynote: Mark Fenton

Mark Fenton is a national public health, planning, and transportation consultant, an adjunct associate professor at Tufts University's Friedman School of Nutrition Science and Policy, and former host of the "America's Walking" series on PBS television. He's author of numerous books including the best selling "Complete Guide to Walking for Health, Weight Loss, and Fitness" (Lyons Press, 2nd edition 2008). He was a developer of the University of North Carolina's Safe Routes to School clearinghouse, and facilitator for the walkable community workshop series of the National Center for Bicycling and Walking; he now provides technical training and community planning as an independent consultant. Mark was a member of the United States national racewalking team from 1986 to 1991, and competed in the 1984 and 1988 Olympic Trials in the 50-kilometer (31-mile) racewalk.

He studied biomechanics at the Massachusetts Institute Technology, was a researcher at the Olympic Training Center's Sports Science Laboratory in Colorado Springs, Colorado, and manager of Reebok's Human Performance Laboratory. Mark has research publications and articles related to exercise science, physical activity promotion, and community level interventions. He's a vocal advocate for non-motorized transportation, a frequent consultant on bicycle and pedestrian community plans, and recognized authority on public health issues and the need for community, environmental, and public-policy initiatives to encourage more walking, bicycling, and transit use.

1:45 pm – 3:00 pm

TIF in Billings: how three local districts manage URDs and TIFDs.

Planning For Resiliency

Ballroom B

1.25 CM

The presenters will cover a brief intro of what TIF is, how it is managed, processed, reviewed, & approved in the City of Billings as well as the associated positive impacts of it as an economic and collaborative tool encouraging private enterprises.

Presenters: Mehmet Casey, Zack Terakedis, Jim Tevlin

5th Avenue North Corridor Study: Public Participation and Planning in a Pandemic

Planning For Community

Ballroom C

1.25 CM

The 5th Avenue North Corridor presented a rare opportunity for the Billings community to create a shared-use mobility route through the heart of Billings. This project kicked off in June of 2020, approximately 3-months after significant shut down of community activities due to the COVID-19 pandemic. Because of the active rail spur, the corridor's diverse constituencies, and the significance of impact to the community, property owner and public participation was critical in project success.

Presenter: Michael Sanderson PE, PTOE

Michael is President/CEO of Sanderson Stewart, a regional engineering, planning and design firm serving the northern Rockies and Pacific Northwest. In addition to his executive role, Michael has practiced in the area of engineering for over 25 years. He is a Fellow of the ITE, teaches as an adjunct member at MSU. Michael also holds BS and MS in Engineering.

Presenter: Lauren Waterton, AICP

Lauren is a senior planner and manager of the firm's Placemaking Studio at Sanderson Stewart. With 25 years of experience in planning, development and design, both in the public and private sector. She has a diverse background in urban planning and design with experience in master planning, site analysis, trail plans, downtown plans, feasibility studies and development design. As the manager of the Placemaking Studio, Lauren works to bridge engineering, landscape architecture and planning.

Presenter: Scott Walker

Scott walker is the Transportation Planning Coordinator for the Billings MPO and City/County Planning Division. He has more than 30 years of experience with transportation planning in Billings, MT.

1:45 pm – 4:30 pm

Mobile Tour: Inclusive Interdisciplinary Walk Audit

Mobile Tour

2.5 CM

TLearn how to conduct an I2 audit with expert Mark Fenton. An I2 audit is the first step to making your community more inclusive, walkable, and moveable for everyone. Mark will touch on why walkability is important for healthy, equitable communities, the 4 elements of walkable communities, and the 3 P's of building a healthier community. Participants will conduct an I2 audit in downtown Billings and develop the skills they need to lead an I2 audit in their own communities.

Presenter: Mark Fenton

Mark Fenton is a transportation, planning, and public health consultant, author, PBS television host, and active transportation advocate. An adjunct associate professor at Tufts University's Friedman School of Nutrition Science and Policy, he combines a public health perspective with engineering expertise (BS and MS degrees from MIT) to provide innovative community-level program, design, and policy solutions to create more walkable, bicycle- and transit-friendly cities and towns.

3:00 pm – 3:15 pm

Afternoon Drink Bar and Snack Break Sponsored By



3:15 pm – 4:30 pm

School Zone: A New Model for Suburban Development in Montana
Planning For Resiliency

Ballroom B

1.25 CM

Growth at the edge of many MT cities has prompted school districts to build new facilities. Once built, these schools catalyze suburban sprawl patterns which threaten the long-term fiscal solvency of local jurisdictions, as well as the quality of life, and lives, of their citizens. To meet this challenge, this report proposes the “School Zone” a growth management tool that coordinates local jurisdictions to leverage the publicly-created value of new schools to all stakeholders.

Presenter: John Halverson

Having recently returned to his hometown in Billings, John works as a Planner at Sanderson Stewart, and holds an Environmental Design degree from Montana State University as well as two M.S. degrees in Community and Regional Planning and Urban Design from the University of Texas at Austin. With a unique perspective informed by his experience as both an architectural and urban designer, John’s work has received special recognition from HUD and the Central Texas APA.

Subdivision Review Timelines
Planning For Community

Conference Room 1

1.25 CM

The Subdivision Review Timeline, from pre-application, through element and sufficiency, and to final decision is full of twists that result in pitfalls for many planning departments. This workshop is designed to provide planners with a comprehensive checklist to track a complex subdivision from the beginning to final decision. It is intended to provide an overview of the subdivision review process and provide a guide to ensure the statutory deadlines are maintained by the planning department.

Presenter: Karen Alley, J.D.

Karen Alley is MACo’s Associate General Counsel, specializing in land use law. Karen spent 10 years as an attorney in Havre, MT. In that time, she engaged in general private practice, criminal defense, and as a prosecutor. Karen was the Hill County Attorney prior to moving to MACo.

Karen is a native of Townsend, MT and spends her free time running the trails around Helena.

Montana Association of Planners Legislative Committee Meeting
Planning For Community

Ballroom C

Not Eligible for CM

This meeting of the Montana Association of Planners Legislative Committee is design to inform and engage planners of the latest information in state policy and legislative activities. This summer has been especially active for legislative discussions affecting Montana’s enabling statutes. At this meeting, you will hear updates on the Working Group, which MAP is a member, and is focused on comprehensive reform. We will discuss the Governor’s Task Force, which we anticipate will have released its draft report by the MAP Conference. We will also discuss MAPs legislative priorities for 2023, and how MAP members can participate in MAP Legislative activities.

Presenter: Andrew Hagemeyer, AICP

Andrew Hagemeyer, AICP is the Long-Range Planning and Implementation Section supervisor for Missoula County Department of Planning, Development and Sustainability (PDS). The Section’s mission is to align the county’s plans, priorities, and implementation tools to the community’s values. Andrew’s career in the public, private and non-profit

sectors of the planning profession has taken him across the state of Montana. Previously, he worked as a consultant for public sector clients, writing long range plans, downtown master plans, and developing regulations for rural and urban communities. In 2014, he worked with the Bullock Administration to draft the Main Street Montana Project Report, a central part of Governor Bullock's economic agenda. While working for the National Parks Conservation Association, he was essential to creating, organizing, and initiating the Whitefish Range Partnership, a collaborative effort with a diverse membership whose mission was to create a shared vision for forest management on the Flathead National Forest. Andrew is an AICP certified professional planner, the immediate past President of the Montana Association of Planners (MAP), and the Co-Chair of MAP's legislative committee.

5:30 pm – 7:00 pm

Montana Association of Planners Social Hour

Location: BAR MT, 2314 Montana Avenue

Sponsored By



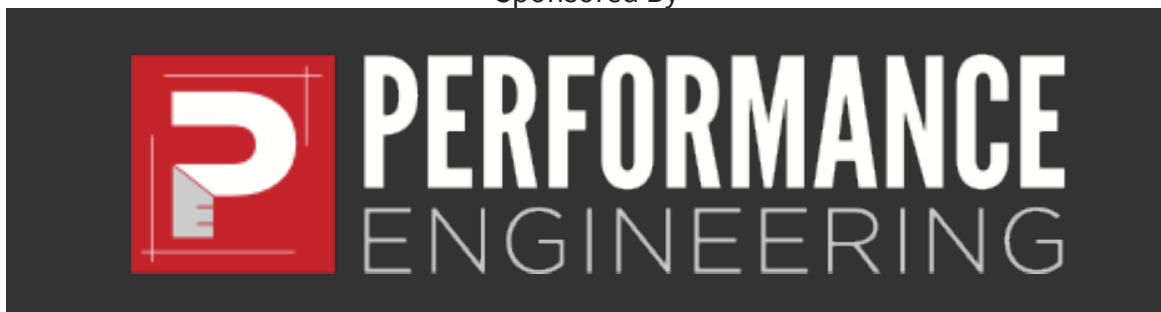
Thursday, September 29

7:00 am – 8:00 am

Breakfast Buffet Served from 8:00-9:00

22nd Floor, Follow Signs

Sponsored By



Morning Drink Bar Sponsored By



8:00 am - 9:15 am

**Building a Housing Pipeline Through Voluntary Incentives
Planning For Resiliency**

Ballroom B

1.25 CM

Building reciprocal relationships with developers is essential to meeting goals around housing development and meeting local needs around dedicated, income-qualified housing. Explore how using voluntary incentives can help achieve these goals and how the City of Missoula utilized a feasibility assessment to guide our voluntary incentives approach.

Presenter: Emily Harris-Shears

Emily Harris-Shears (she/her/hers), is a housing policy specialist with the City of Missoula. She is focused on implementing solutions that address urgent housing needs and mitigate market factors. Emily has worked in program design, funding and housing policy for the last decade.

**Plenary Session with Mark Fenton: Analysis of Inclusive Walk Audit
Planning For Community**

Ballroom C

1.25 CM

Communities and stakeholders across Montana are using increasingly innovative and inclusive techniques to engage professionals, elected and appointed board members, advocates, and a broad array of residents in planning and implementing active transportation projects and policies. This session will convene a panel of those who have utilized techniques such as I2Audits, Accessibility Ambassadors, and participants in MTDH's Building Active Communities Initiative (BACI) to share lessons learned in creating opportunities for healthy active transportation for people across the spectrum of age, income, race, background, ability and disability.

Presenter: Mark Fenton

Mark Fenton is a transportation, planning, and public health consultant, author, PBS television host, and active transportation advocate. An adjunct associate professor at Tufts University's Friedman School of Nutrition Science and Policy, he combines a public health perspective with engineering expertise (BS and MS degrees from MIT) to provide innovative community-level program, design, and policy solutions to create more walkable, bicycle- and transit-friendly cities and towns.

9:30 am - 10:45 am

**HUD Connections and Resources in Montana
Planning For Resiliency**

Ballroom B

1.25 CM

HUD has many programs and resources that provide support to communities, organizations and individuals. This session will introduce you to the work of the local Montana Field Office, an opportunity to connect with HUD information and data, and information on how to convene with HUD in areas that can enhance the role that HUD can provide in your community,

Presenter: Jackie Girard, HUD State Director

**Electronic Survey Review in Yellowstone County: Improving review efficiencies
Planning For Community**

Ballroom C

1.25 CM

The City of Billings and Yellowstone County have implemented electronic plan review of certificate of surveys and amended plats to improve efficiency and timeliness of the staff review process. In this session Monica Plecker, Planning Division Manager and Jeff Martin, Yellowstone County Clerk and Recorder along with a surveyor will demo the program which allows for real-time concurrent review and will discuss the electronic process and its successes and challenges.

Presenter: Monica Plecker, AICP

Monica Plecker is the Planning Division Manager for the City of Billings and Yellowstone County oversees division operations. She has 11 years of planning experience in various capacities in Yellowstone County and has worked in both private and public sector planning. She is a member of the American Institute of Certified Planners (AICP) and is a current board member for the Montana Association of Planners. She was recognized by the Billings Gazette in the 2020 class of 40 under 40.

Jeff Martin

Jeff Martin is the Clerk and Recorder for Yellowstone County, Jeff is has extensive background in land transactions and is an integral part of the review process of survey's and subdivisions.

Robbin Bartley

Robbin Bartley is the Administrative Assistant for the City of Billings Planning and Community Services Department. She has been in this position since 2015. One of her tasks is the continual processing of all exempt plat electronic submittals. Other duties include public contact, invoicing, office supplies, clerking Board's and Commission meetings and various other staff needs. Her interests include horses, gardening and reading. She is recently SCUBA certified and can't wait to start exploring the world down under.

Introduction to Accessibility Law

Planning For Transportation

Conference Room 1

1.25 CM Law/Equity

More than three decades after the passage of the Americans with Disabilities Act, there is still widespread failure to make our communities accessible to those with disabilities. From public meetings to transition plans, land use planners have a unique opportunity to help elected officials understand, plan for, and implement accessibility features that will make your community more inclusive, increase public participation, and comply with the law.

This session will provide an overview of the basics of the ADA and its accompanying rules and guidance, explain when and where the requirements apply, and identify specific steps planners can take to make their communities more accessible.

Presenter: Kelly A. Lynch, JD, AICP

Kelly has more than 20 years of experience as an attorney and local government advocate. As Executive Director of the Montana League of Cities and Towns, she focuses on collaboration between public agencies, the private sector, and elected officials with diverse backgrounds to provide creative, efficient, and effective leadership for Montana's communities. Kelly joined the League as Deputy Director and General Counsel in 2016. Kelly previously served as the Community Development Division Administrator and Special Projects Legal Counsel for the Montana Department of Commerce, Deputy County Counsel for Santa Barbara County, and as an Associate at Richards Watson & Gershon in Los Angeles. Originally from East Helena, Montana, Kelly earned a Master's degree in Urban Planning and a law degree from the University of California at Los Angeles. She earned her certification from the American Institute of Certified Planners in 2015.

Mobile Tour: Downtown Walking Tour - Lights of Broadway

Mobile Tour

1.25 CM

Discover Billings and Yellowstone County! Take a morning walk through the heart of downtown Billings to learn about the development of North Broadway and the historical characters who walked the streets. This tour begins at the hotel lobby.

Presenter: Lauren E. Hunley

Lauren E. Hunley has spent nearly 20 years in the museum field. Earning her Master of Arts in Learning & Visitor Services in Museums and Galleries through Leicester University in England, she's worked for both small museums and national museum service organizations. She is the author of 101 Museum Programs on a Shoestring Budget and has presented at numerous museum conferences. She is currently the Community Historian at the Western Heritage Center in Billings, Montana.

11:00 am - 12:30 pm

Ethics Cases: Year in Review Planning For Community

Ballroom C

1.5 CM Ethics

An overview of APA Ethics cases and outcomes in 2021.

Presenter: Allison Mouch, AICP

Allison joined Orion Planning + Design in September 2016 and is currently based in Missoula, Montana. Bringing 16 years of professional planning experience to the team, her areas of specialization include comprehensive plans, code development, public engagement, project management, mapping, and analysis, with a focus on collaboration as a means of achieving positive outcomes. Mouch has wide-ranging experience working with private developers and public clients on forward-thinking land use and design solutions, fostering meaningful partnerships that result in sound policy and planning decisions. She is AICP and an active member of the American Planning Association (APA) as the Region V Board Director, past-president of APA's Western Central Chapter, and currently sits on the Montana Association of Planners (MAP) Board of Directors. She holds a bachelor's degree in architecture from Miami University (Ohio), and a master's degree in urban and environmental planning from the University of Virginia in Charlottesville.

12:30 pm - 1:30 pm

Lunch

22nd Floor, Follow Signs

Closing Remarks

Montana Association of Planners Membership Meeting (all are welcome)

Sponsored by

