

Lockwood the Community

September 15, 2011

2011 MAP Conference

Montana Association of Planners

Huntley Lodge, Big Sky, MT

Lockwood, MT (unincorporated)

- Population approximately 8,000
- School District #26 – 1,173 students in K-8
 - Plus 500 students in School District #2 grades 9-12
- Approx 150 businesses
- 5 Districts formed to serve the community
- Lockwood Steering Committee
- Website <http://lockwoodmontana.com/>



Building
the
Future

**LOCKWOOD
SCHOOLS**



**LOVE & LOGIC
PARENTING
CLASS
248-3239X8**

ASK
MVC



Lockwood Rural Fire District #8



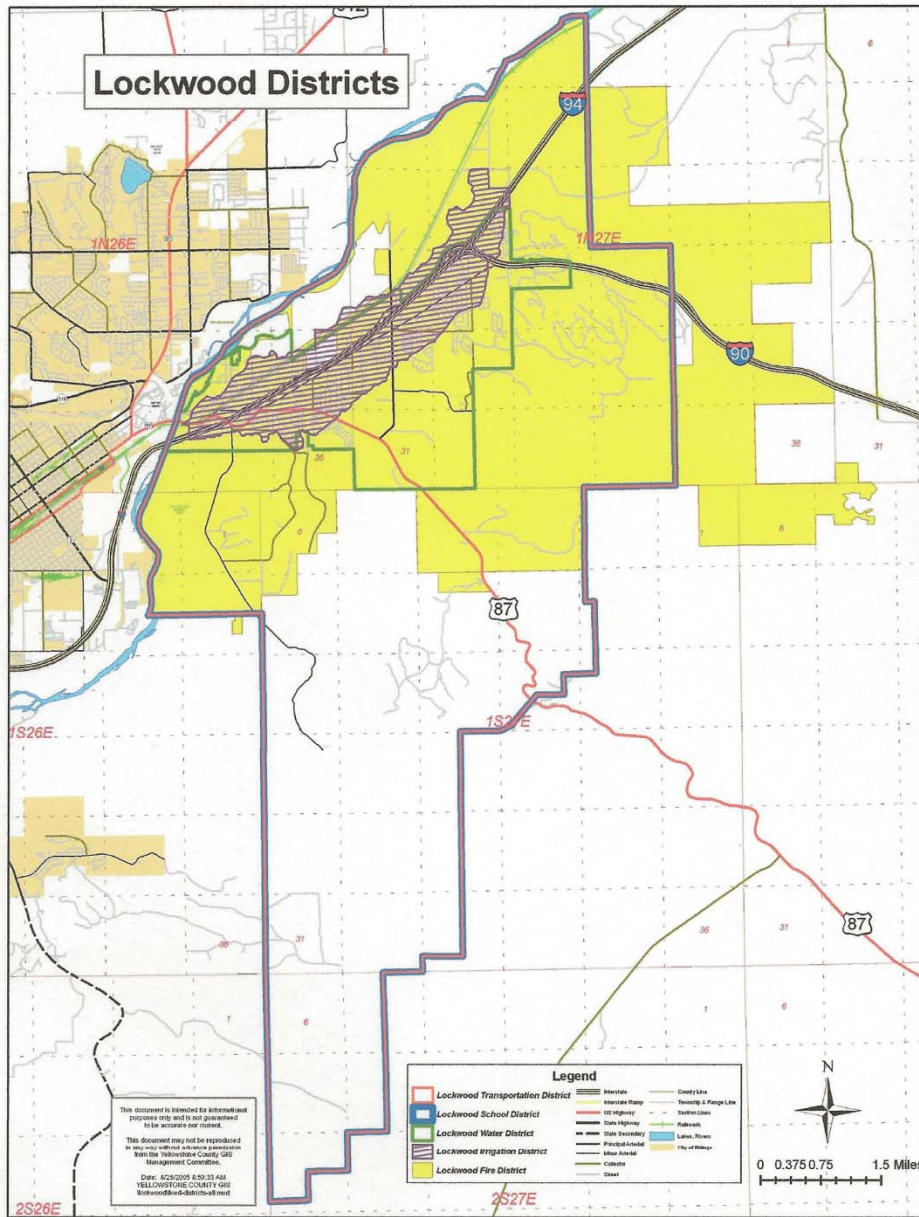
Other Districts

Lockwood Urban Transportation District

- Originally, it was formed to facilitate the construction of the Johnson Lane Interchange on I-90. It has continued to work to address the transportation infrastructure needs of the community. Primary concerns today are transportation safety needs around the school.

Lockwood Irrigation District

- Lockwood was originally a farming area near the City of Billings. The Irrigation District has three canals that meander through the community and although there are still agricultural demands for water on the system it provides irrigation water to the residences for more varied uses today.



Map 1. The Five Service Districts in Lockwood

Lockwood Steering Committee

Members from each of the Districts

Members at large

Meet monthly (third Thursday)

Share information and discuss current issues

Special Studies

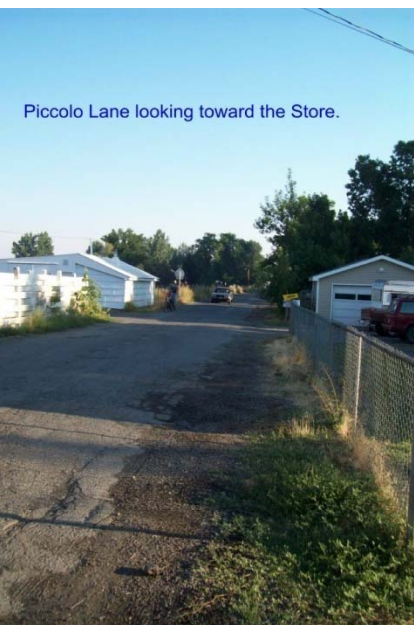
Lockwood Community Plan 2006

Lockwood Annexation Study 2007

Lockwood Transportation Study 2009

Lockwood Safe Routes to Schools 2011

Piccolo Lane / Hwy 87 Intersection



Johnson Lane/Hwy 94 Intersection



Johnson Lane looking north to
the freeway over pass

Contract Postal Unit



Thank You

Questions???