
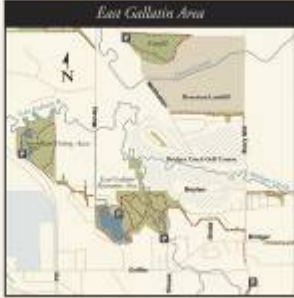


Main Street to the Mountains Trails



Southeast Bozeman



East Gallatin Area

Map Legend

- Trails
- Paved Shared-Use Paths
- Roads
- Streams
- Trail Parking
- Grounded for Private Selling
- Parks & Open Space
- Bozeman Public Schools
- Montana State University
- State Lands
- Bozeman Landfill Property

0 0.25 0.5 Miles

Trail Safety & Etiquette

Trails are for Non-Motorized Use

All Users Please:

- Stay on the trail
- Keep on vehicle
- Respect private property
- Pick up litter
- Report maintenance needs

Cyclist Please:

- Stay right and pass on left
- Walk when on trail
- Yield to hikers when right-of-way
- Stop before the camera
- Give one side on muddy trails


Dog Owners Please:

- Clean up after your dog
- Leash dogs or keep under control

Main Street to the Mountains

Trail Map

- Bozeman, Montana




GALLATIN VALLEY LAND TRUST
TRAIL TO CONSERVATION

Thank You to our Sponsors

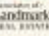
The Main Street to the Mountains trail system is the community and its shared assets created by Gallatin Valley Land Trust. They work to keep our community healthy and vibrant by restoring, improving and maintaining the trail system. We work in partnership with the City of Bozeman and numerous organizations, businesses and individuals. Contact us to find out why we're so proud to have you as an affiliate or partner with us. Gallatin Valley Land Trust is a community based and non-profit organization. Some public organizations. Revenue is number of 501(c)(3) not-for-profit.

This trail map was made possible thanks to generous donations from the following local businesses:

Northern Lights Trading Co.




ACE Hardware



The Association of **Landmark** REAL ESTATE


www.gallatinvalleylandtrust.org 406.592.6444



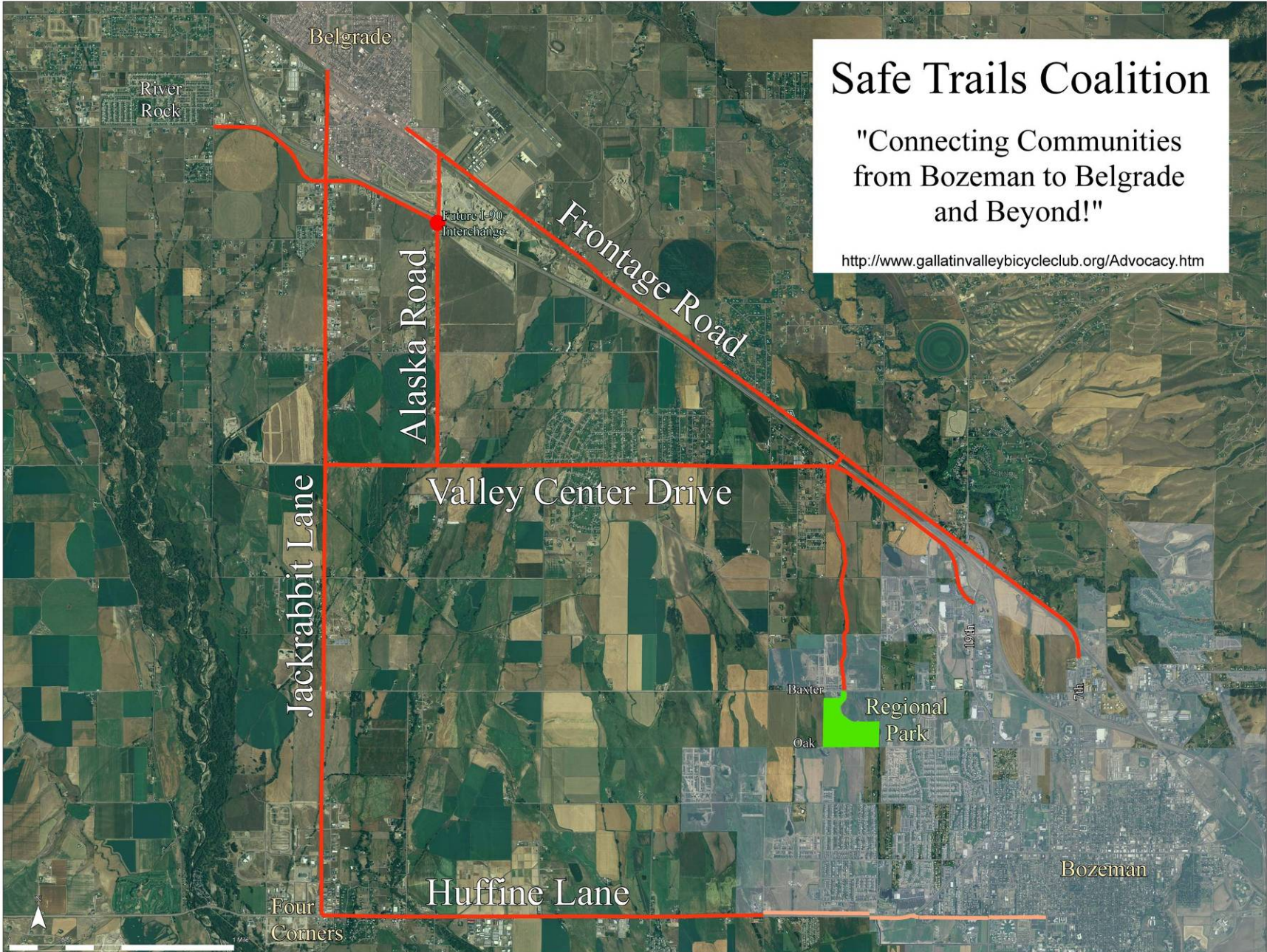
Map Legend

- Trails
- Paved Shared-Use Paths
- Roads
- Streams
- Trail Parking
- Parks & Open Space
- Bozeman Public Schools
- Montana State University
- State Lands
- US Fish & Wildlife Service
- Gallatin National Forest
- Bozeman Wastewater & Landfill Property

0 0.25 0.5 Miles



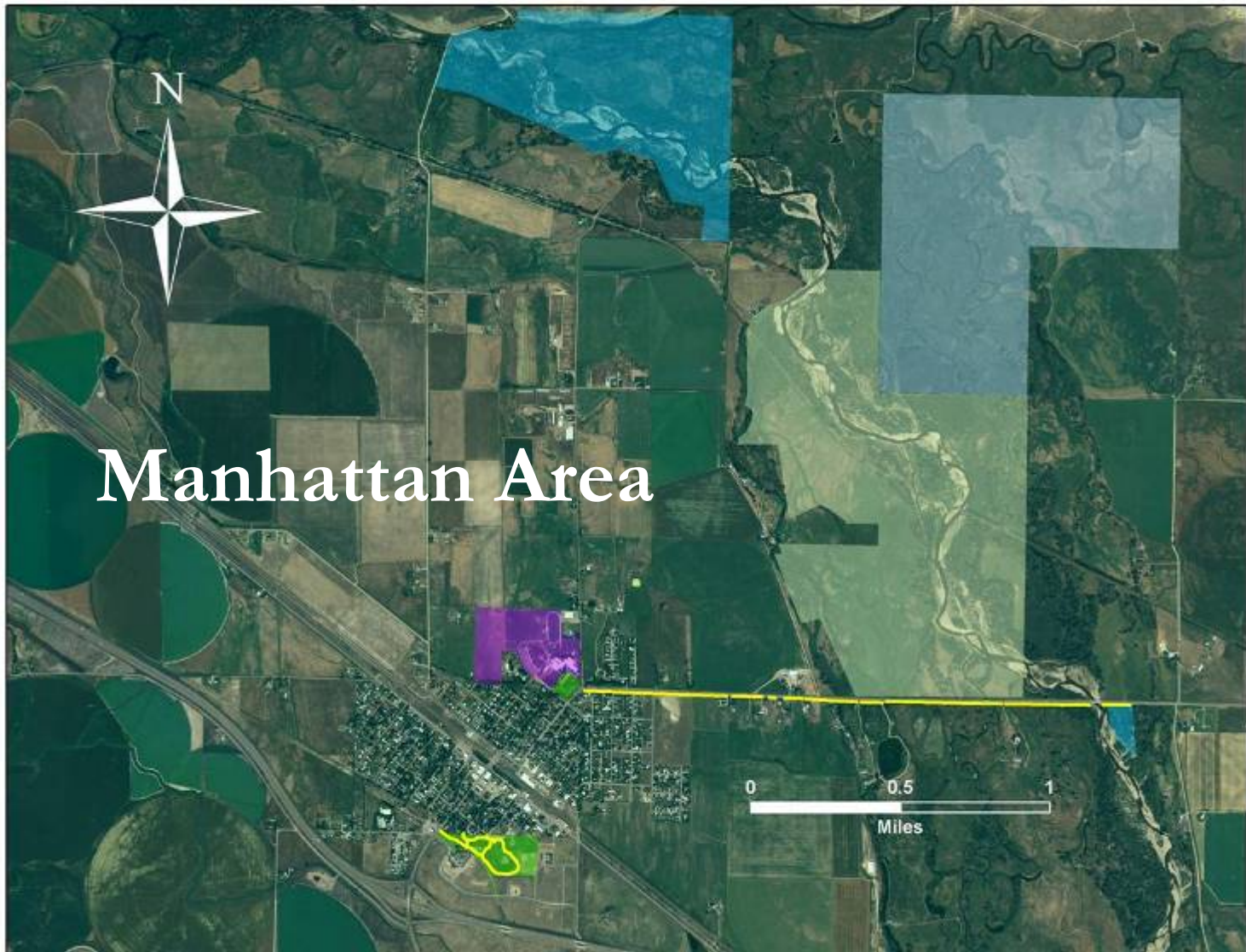
Bozeman Trails
Main Street to the Mountains
A Bozeman Community Project



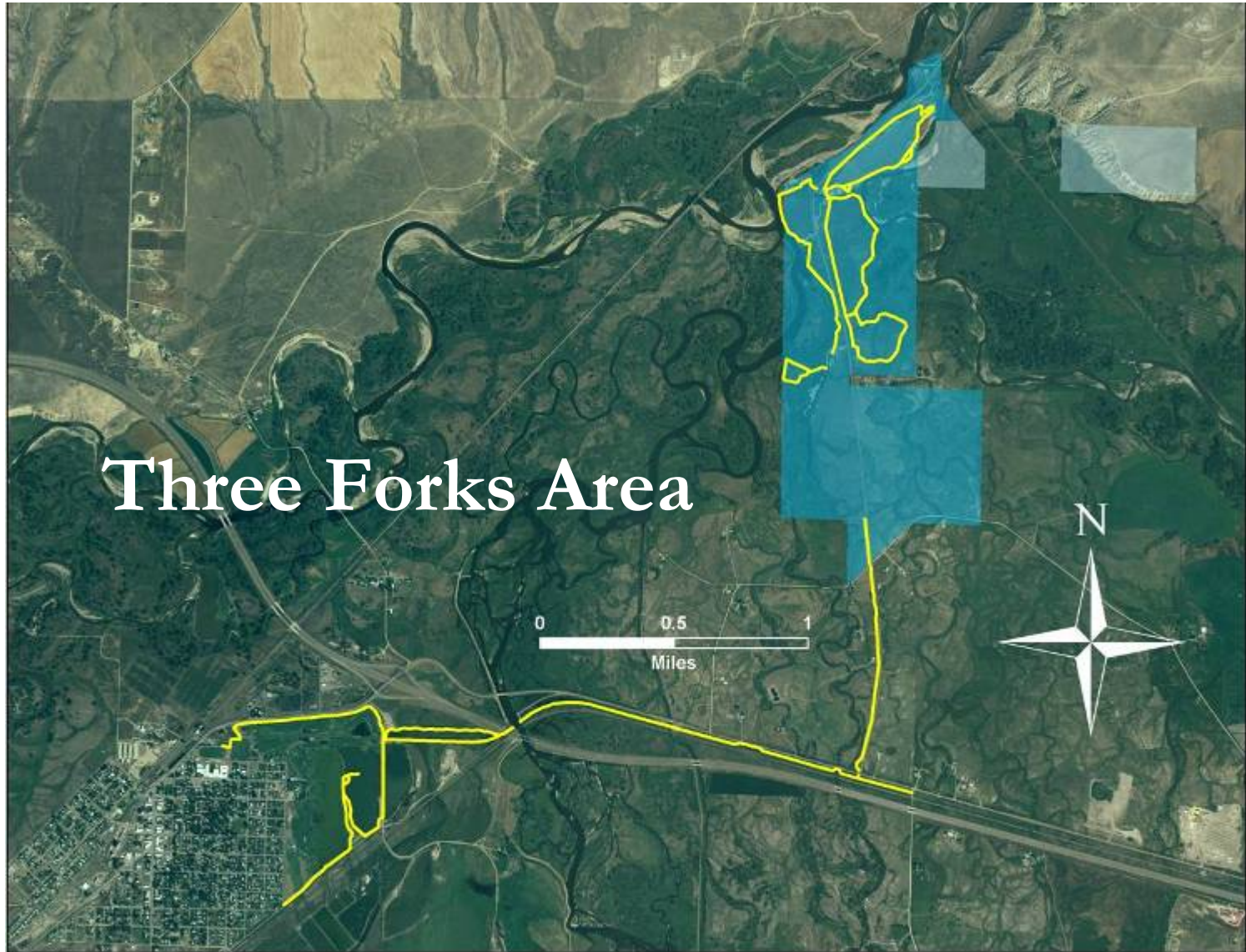
Safe Trails Coalition

"Connecting Communities
from Bozeman to Belgrade
and Beyond!"

<http://www.gallatinvalleybicycleclub.org/Advocacy.htm>



Compelling & Achievable

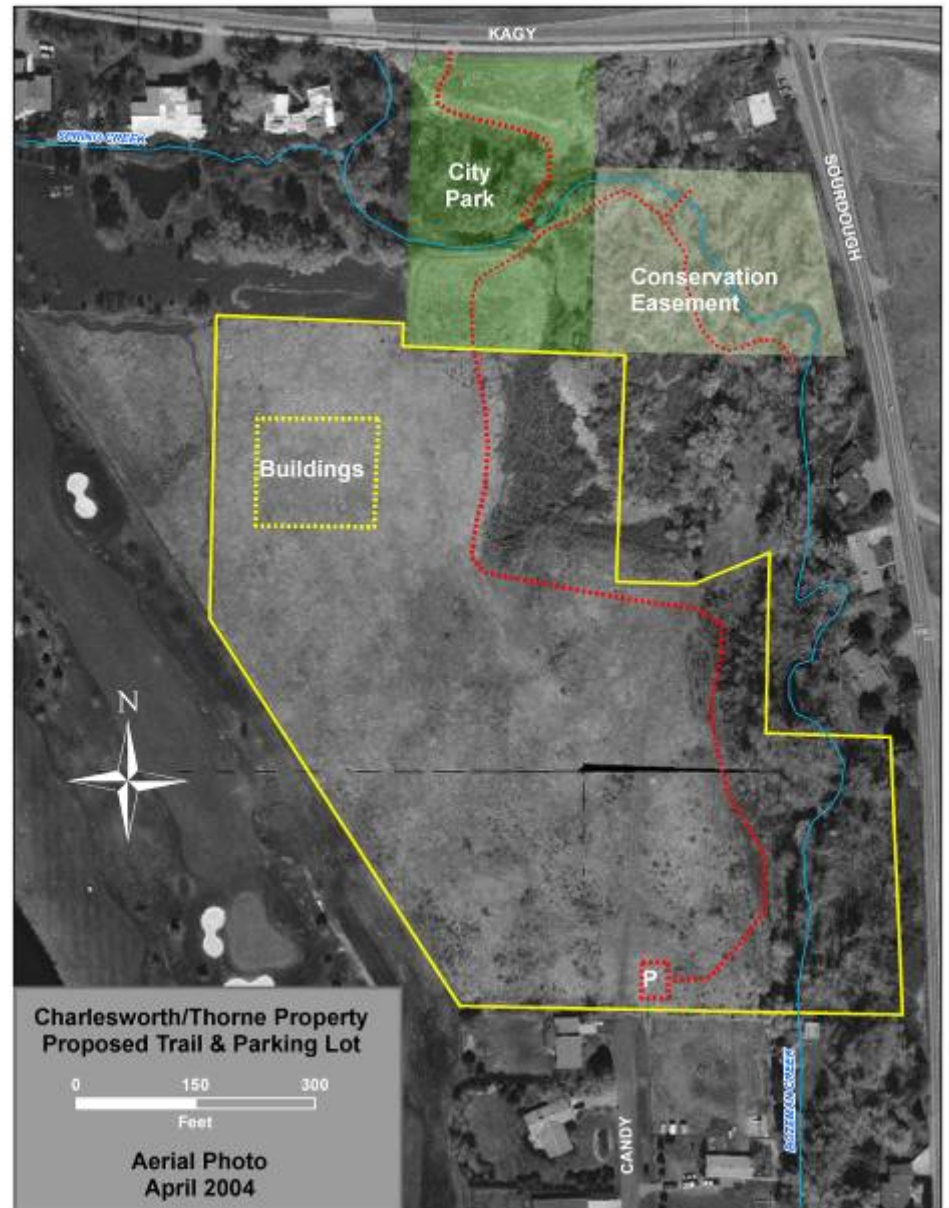


Three Forks Area



Big vs. Small

Combining Trails & Land Conservation



Developing Landowner Relationships



Celebrate Your Victories!





**By Building Trails
We Build Community**