

Partnerships

Public

Private

Non-profit

Volunteer



Coordination & Delegation



Montana Fish, Wildlife & Parks

Trail Costs (in Bozeman)

\$30,000 / mile

6' Gravel trail

\$98,210 / mile

10' Asphalt trail

\$281,600 / mile

10' Concrete trail



Bridge Costs & Construction

\$12,000 to \$50,000



wood vs. steel span

maintenance

longevity



engineering

permitting

Trail Easements

donated ~ purchased ~ bargain sale

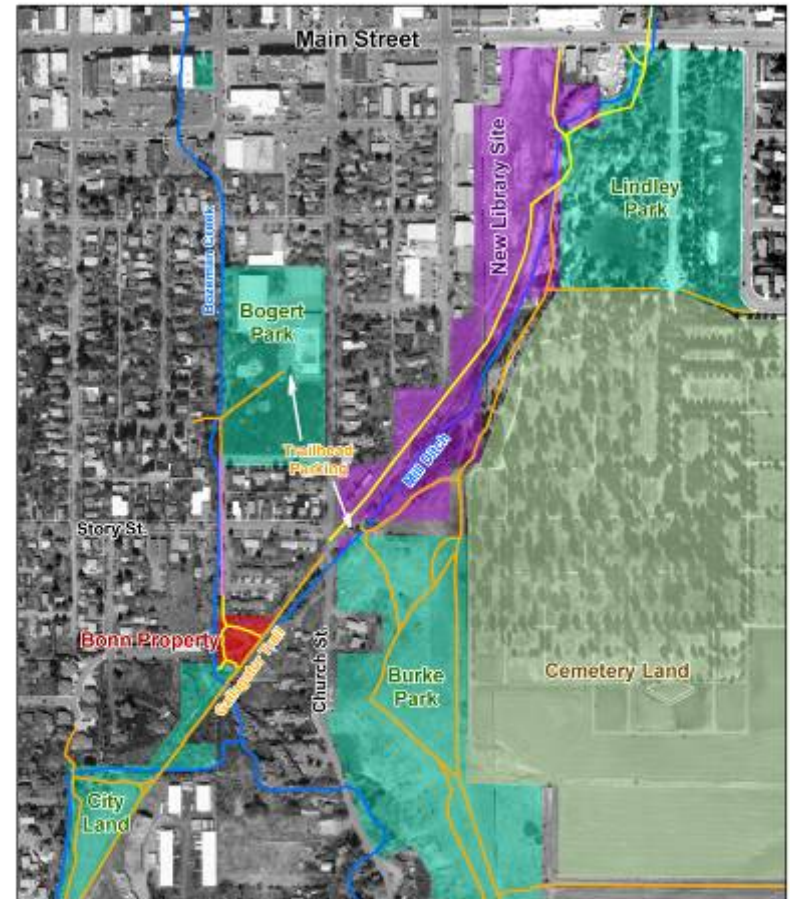


easement template ~ appraiser ~ attorney

surveyor ~ easement holder

Other Trail Easement & Land Acquisition Tools

- Option Agreements
- Bridge Funding



Bonn Property Acquisition Opportunity - Vicinity Map

- | | |
|---------------|---------------------------------|
| Bonn Property | Existing Trails |
| Public Land | Proposed Trails |
| Library Land | Low-Traffic On-Street Connector |

0 0.05 0.1
Miles



GIS map produced by Galatin Valley Land Trust ©2009

GVLT Fundraisers

Make Tracks for Trails

National Trails Day

Longest Day of Trails

Trails Mix



Funding Sources

Where will funds be held?

CTEP (Community Transportation Enhancement Program)

MT Fish Wildlife & Parks
Recreational Trails Program

MT Fish & Wildlife Conservation Trust

Safe Routes to School

City & County Funds

Developers

Businesses

Individual Donors

In-kind donations of labor, materials, professional services (legal, GIS, engineering, etc.)

Montana Conservation Corps



Maintenance & Improvement

Whose responsibility? Funding sources?



Partnerships ~ Volunteers ~ Memorials

Drinking Horse Mountain Trail



Land Donated to US Fish and Wildlife Service



**Gallatin National Forest
Gallatin Valley Land Trust
Friends of the Fish Tech.
Montana Outdoor Science School
Mountain Sky Guest Ranch**



Library Trail



Library Bond
CTEP Funding
Park Improvement
Funding



Federal Earmark
GVLТ Involvement

Burke Park



Grass Roots Effort

Federal Funds (Forest Service and City of Bozeman)

State Land and Water Conservation Funds

Trails Improved by GVLТ

Funded with Grants and Donations

Jointly Managed by City and GVLТ

Snowfall Recreation Area & Hedvig's Trail



City Landfill Parcel

“Buff in the Bozone” 2007 calendar

Memorial

Conservation Corps

Trails Day Volunteers

In-Kind Fencing & Parking Lot



Three Bridges Project

Cash

Recreational Trails Program

Private Donations and Memorials

In-Kind

Materials

Engineering

Permitting



Sourdough Canyon Trailhead

Land Donation

Stakeholders/Public
Planning Process

Gallatin Valley Land Trust

City of Bozeman

US Forest Service

County Road Department

Montana Fish Wildlife and Parks

Recreational Users

Private Land Owners

